

The purpose of this document is to provide technical details for the Record On Motion feature which was introduced in Ocularis version 5.2. The patch released in February 2017 provided an enhancement to this feature as relates to camera side motion detection for certain Smart Drivers.

Record on Motion

Introduced in Ocularis v5.2, motion detection recording has been updated, streamlined and packaged into a feature called 'Record on Motion'.

Record on Motion differs from prior versions of Ocularis 5 in that if enabled, video will be recorded when there is motion only. When motion stops, recording stops. In Ocularis 5.1, the only option for motion recording was where video was recorded for a set duration whether motion continued or not. While this form of motion detection recording is still available, Record on Motion is much more efficient and makes better use of storage space. It also eliminates the need for alarm scenarios which frees up resources on the core. Lastly, it is so much easier to configure.

Video recorded using Record on Motion will be categorized as alarm recording. With Record on Motion, you can set pre and post buffers on a camera-by-camera basis. Multi-camera configuration is also supported and you can enable Record on Motion when adding cameras using the Device Finder.



Record on Motion may be used with either camera side or server side motion detection. When using certain Smart Drivers, camera side Record on Motion is now supported. Supported drivers include: Arecont Vision, Axis, Bosch, Hikvision, Interlogix, Northern Video, Samsung and Sony. It also supports the use of motion detection regions inside an image.

HOW TO CONFIGURE RECORD ON MOTION

In order to enable Record on Motion, either camera side or server side motion detection must be enabled first. The following examples will be discussed:

- Configuring Record on Motion on a Single Camera
- Configuring Record on Motion on a Group of Cameras
- Configuring Record On Motion When Adding Cameras

To Configure Record On Motion on a Single Camera

1. In Ocularis Recorder Manager, open the configuration screen for the camera you wish to configure.
 - Camera side (using a static driver):
 - i. Choose **Motion Detection** under 'Camera side functions'.
 - ii. Activate one or more preconfigured windows to be used for motion detection analysis.
 - iii. The **Dead time** setting will be ignored by Record on Motion.
 - iv. Click **Apply**.
 - Camera side (using a supported Smart Driver):
 - i. Choose **Event trigger** under 'Camera side functions'.
 - ii. Activate a Motion Detection preconfigured window to be used for motion detection analysis.
 - iii. The **Dead time** setting will be ignored by Record on Motion.
 - iv. Check the **Record on Motion** box adjacent to the selected window.
 - v. Click **Apply**.
 - Server side:
 - i. Choose **Motion Detection** under 'Server side functions'.
 - ii. Set **Activate motion detection** to **Yes** using the drop-down.
 - iii. Set the desired **Sensitivity** and **Threshold**.
 - iv. The **Idle timer** will be ignored by Record on Motion.
 - v. If you wish to set one or more regions in the image, use the plus and polygon tools  
 - vi. Adjust **Sensitivity** and **Threshold** for each region separately.
 - vii. Click **Apply**.
2. Choose **Record On Motion** under 'Image Storage'.

3. Enable **Record on Motion** by selecting **Yes** from the drop-down list.
4. Pre and post buffer is defaulted to 3 seconds for each. Modify these values if desired.
Notice that the system recognizes that Camera side or Server side motion detection is enabled. You must first enable it prior to saving this screen.
5. Click **Save** to save these settings.

That's it! You are done!. Alarm scenarios need not be configured. The video that is recorded due to motion will be coded in red on the Kinetic Timeline in Ocularis Client.

To Configure Record On Motion on a Group of Cameras

Multi-camera configuration is supported with Record on Motion. Remember that either camera side or server side motion detection must be enabled first. This example is going to use server side motion detection.

1. In Ocularis Recorder Manager, select the checkbox next to each you wish to configure.
2. Click the **Edit** tool.

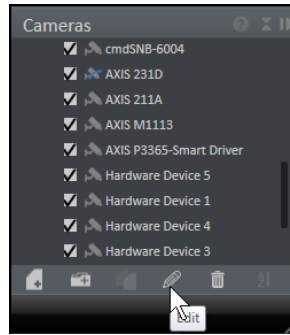


Figure 1 Edit Tool

Notice that the configuration tab is labeled 'Multiple IP cam...' to indicate that multiple cameras will be configured.

3. Choose **Motion Detection** under either 'Server side functions'.

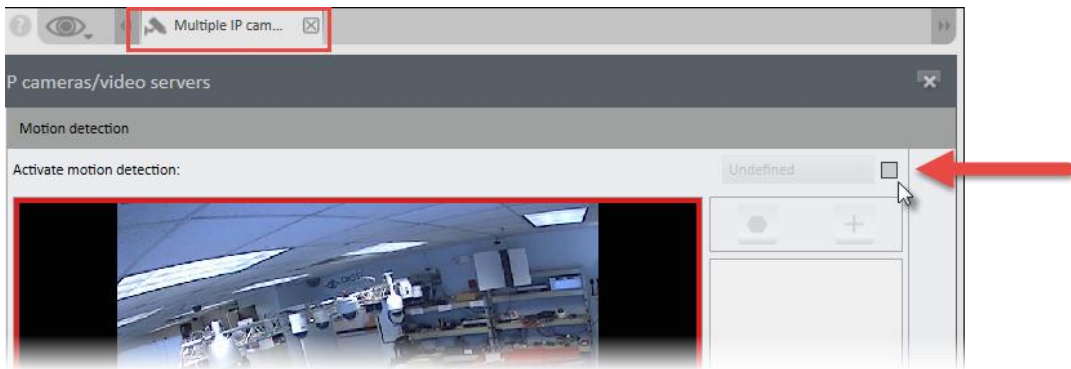


Figure 2 Multi-configuration for Motion Detection

4. Check the checkbox next to the drop-down for **Activate motion detection**.

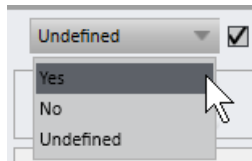


Figure 3 Enable drop-down menu

5. Once checked, the drop-down is enabled. Select **Yes**.
6. Click **Apply**.
Sensitivity and **Threshold** will need to be adjusted later for each camera individually.
7. Choose **Record On Motion** under 'Image Storage'.

8. Click the checkbox next to Enable **Record on Motion**.
9. Select **Yes** from the drop-down list.
10. If you want to apply the same Pre and post buffer settings to the cameras, click the corresponding checkboxes to enable the field entry and set the desired change. Otherwise, the defaults of 3 seconds each will be applied.
11. Click **Save** to save these settings on all cameras.

To Configure Record On Motion During Camera Installation

When using the Device Finder Tool to add cameras, you may also enable server side motion detection and Record on Motion recording.

1. In Ocularis Recorder Manager, launch the Device Finder.
2. Locate and select the cameras you wish to add. You may also use the **_** to add cameras.
3. For each camera that you wish to enable Record on Motion, click the checkbox under Record on Motion.

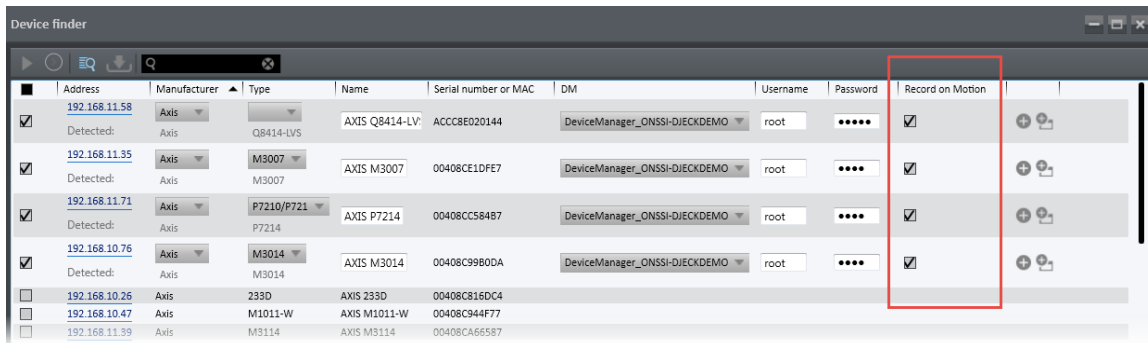


Figure 4 Enable Record on Motion checkbox during Device Finder Add

4. When done, click **Add**. You can add with multi-config if you want.

Now these cameras will have server side motion detection activated and Record on Motion enabled. You should still review and if necessary modify the **Sensitivity** and **Threshold** settings for each camera in the Server Side Motion Detection screen.

MOTION DETECTION RECORDING AND UPGRADES FROM v5.1

If you have what was considered 'Basic' motion detection recording configured on your v5.1 system (i.e. where the Record on Motion drop-down was set to 'Yes' but no alarm scenarios were created. Video was recorded for 30 seconds regardless of whether there was continued motion and with no pre or post buffer) and you upgrade to v5.3 (including upgrading the recorder), the system will convert these camera configurations and enable Record on Motion. No further action is required. Keep in mind that the default values for pre- and post- buffers of 3 seconds will be used. If you want, you may modify these settings. The settings in the server side or camera side motion detection screens remain unchanged.

If you have motion detection already configured in v5.1 using alarm scenarios and you upgrade to v5.2 (including upgrading the recorder), your alarm scenarios and motion detection recording will still continue to work as before. No action is required.

However, we recommend that you enable some or all of your cameras for Record on Motion to take advantage of its efficiencies. Remember that you can enable Record on Motion with multi-config for a group of cameras to make it easier. Also, if you do decide to enable Record on Motion, you will need to delete or deactivate the corresponding alarm scenarios. If you do not deactivate alarm scenarios that do motion detection recording, they will continue to function as before and will result in excess recorded video. Deactivating alarm scenarios is supported with group edit to modify multiple scenarios in bulk. Reducing the number of alarm scenarios will also free up resources on the core.