



# **Ocularis**

---

## **Symmetry Ocularis Plug-in Installation / Configuration Guide**

**On-Net Surveillance Systems, Inc.**  
One Blue Hill Plaza, 7<sup>th</sup> Floor, PO Box 1555  
Pearl River, NY 10965  
Phone: (845) 732-7900 | Fax: (845) 732-7999  
Web: [www.onssi.com](http://www.onssi.com)

*Symmetry Ocularis Plug-in Installation 5.1.801.0*

00002262015-1712-4.0-.1.1.6.0

**LEGAL NOTICE**

This product manual is intended for general information purposes only, and due care has been taken in its preparation.

Any risk arising from the use of this information rests with the recipient, and nothing herein should be construed as constituting any kind of warranty.

© 2002-2016 On-Net Surveillance Systems, Inc. All rights reserved. OnSSI and the 'Eye' logo are registered trademarks of On-Net Surveillance Systems, Inc. Ocularis, Ocularis Client, Ocularis Client Lite, Ocularis Video Synopsis, NetEVS, NetDVMS, NetDVR, ProSight, NetGuard, NetGuard-EVS, NetSwitcher, NetMatrix, NetCentral, NetTransact, NetPDA and NetCell are trademarks of On-Net Surveillance Systems, Inc. All other trademarks are property of their respective owners.

On-Net Surveillance Systems, Inc. reserves the right to change product specifications without prior notice.

US patent # 8,390.684 B2 for Ocularis Client

Patents Applied For in the U.S. and Abroad

# Table of Contents

LEGAL NOTICE .....	2
<b>INTRODUCTION.....</b>	<b>2</b>
<b>GETTING STARTED WITH OCULARIS.....</b>	<b>2</b>
REVIEW SYMMETRY MANUALS .....	2
REVIEW OCULARIS MANUALS .....	2
INSTALLATION & CONFIGURATION.....	2
SPECIAL NOTES .....	2
<b>INSTALLATION PROCESS .....</b>	<b>3</b>
INSTALL OCULARIS SDK .....	3
INSTALL OCULARIS PLUG-IN INSTALLER .....	3
<b>CONFIGURATION PROCESS .....</b>	<b>4</b>
LAUNCH SYMMETRY.....	4
KNOWN ISSUES.....	5
<b>CONTACT INFORMATION .....</b>	<b>6</b>

## Introduction

This manual provides detailed instructions for installing and configuring the Symmetry Ocularis Plug-in to receive Ocularis into Symmetry.

## Getting Started with Ocularis

### REVIEW SYMMETRY MANUALS

- Review the *Symmetry User Guide* documentation.

### REVIEW OCULARIS MANUALS

- Review the *Ocularis Installation and Licensing Guide* documentation.
- Review the *Ocularis Administration User Manual* documentation.
- Review the *Ocularis Client User Manual* documentation.

### INSTALLATION & CONFIGURATION

- Once all Ocularis components are installed, synchronize the date and time between the server and workstations.

### SPECIAL NOTES

- Upgrading any plug-in version older than 2.0.0 (older than 2015) - After installation, the Ocularis Server found in Symmetry's Install \ Video & Audio \ Digital Video must be opened and saved. The computer must then rebooted. This step implements a new, more secure method of storing the server configuration. Symmetry will not connect to Ocularis until this is done.
- Support for Symmetry version 8 requires Symmetry patch "8.0.1 patch (141013) (NoFP)".

## Installation Process

If upgrading any plug-in version, you must first uninstall the old plug-in. This does not remove the Ocularis configuration from Symmetry.

### INSTALL OCULARIS SDK

Run **OnSSI\_Ocularis\_SDK\_5.1.0.173.exe**. Install ONLY to the default directories.

### INSTALL OCULARIS PLUG-IN INSTALLER

Run **OcularisPluginInstaller.exe**. Install ONLY to the default directories. This installs the **Ocularis Plug-in**.

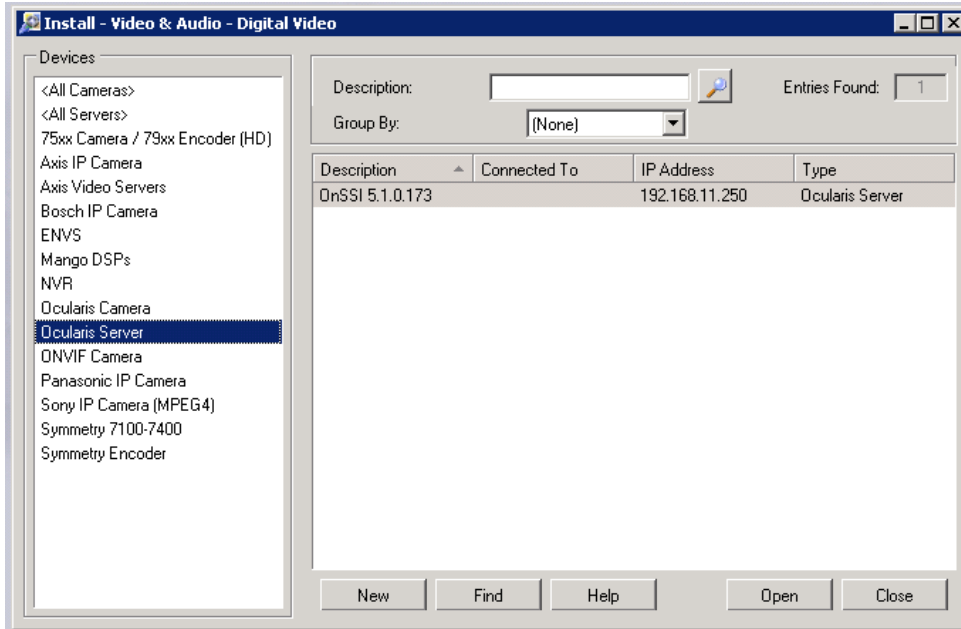
Reboot the computer, and wait for Symmetry to fully start. (If running Symmetry's Service Monitor, the icon will turn green. See Symmetry installation manual.)

## Configuration Process

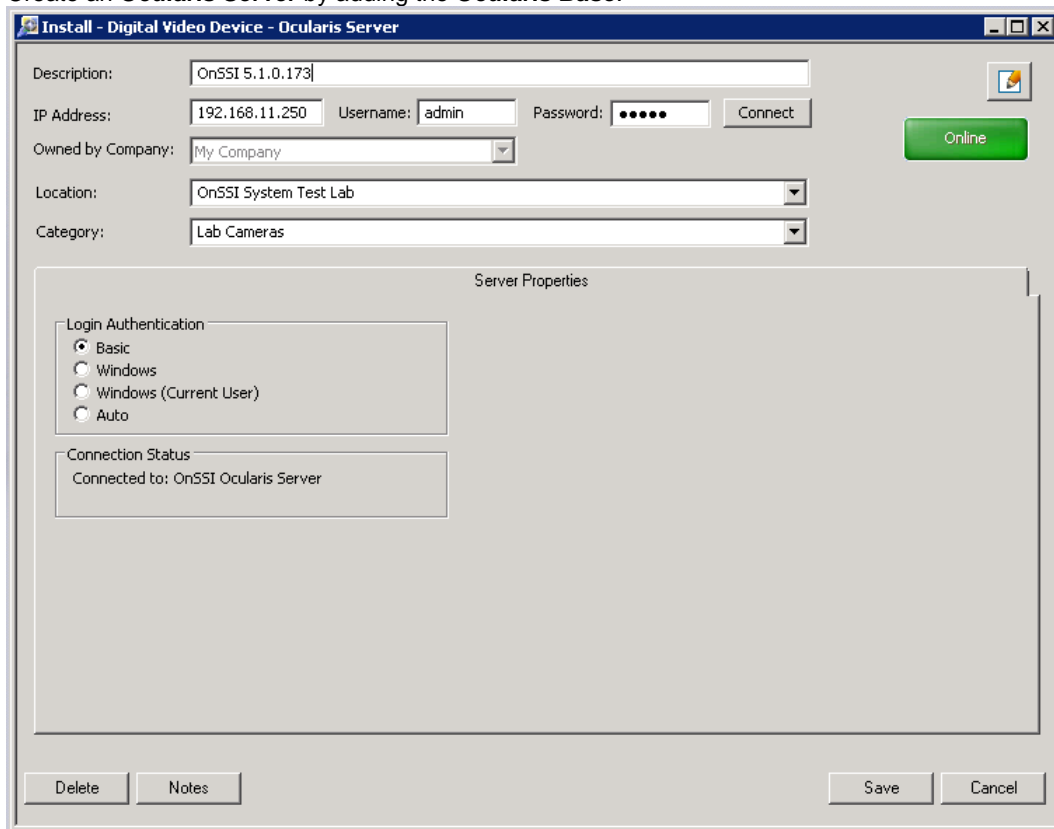
### LAUNCH SYMMETRY

Run Symmetry. Log in as "installer".

Go to **Install \ Video & Audio \ Digital Video**.



Create an **Ocularis Server** by adding the **Ocularis Base**.



Reboot the computer to apply the new **Ocularis** login information to the **Ocularis Plug-in** system process.

You will now be able to add cameras (in **Install \ Video & Audio \ Digital Video**) and use the system.

#### KNOWN ISSUES

Any time the Ocularis Server login configuration is changed in Symmetry, the computer must be rebooted to apply the new settings to the Ocularis Plug-in system process.

## Contact Information

### On-Net Surveillance Systems (OnSSI)

One Blue Plaza

7th Floor

P.O. Box 1555

Pearl River, NY 10965

Website:	<a href="http://www.onssi.com">www.onssi.com</a>	
General:	<a href="mailto:info@onssi.com">info@onssi.com</a>	845.732.7900
Fax:		845.732.7999
Sales Support:	<a href="mailto:sales@onssi.com">sales@onssi.com</a>	845.732.7900 x 1
PreSales Support	<a href="mailto:se@onssi.com">se@onssi.com</a>	845.732.7900 x 2
Technical Support:	<a href="mailto:support@onssi.com">support@onssi.com</a>	845.732.7900 x 3
Training:	<a href="mailto:training@onssi.com">training@onssi.com</a>	845.732.7900 x 4
Marketing:	<a href="mailto:marketing@onssi.com">marketing@onssi.com</a>	845.732.7900 x 5