



Ocularis

OnGuard to Ocularis Event Proxy Administrator Guide

On-Net Surveillance Systems, Inc.
One Blue Hill Plaza, 7th Floor, PO Box 1555
Pearl River, NY 10965
Phone: (845) 732-7900 | Fax: (845) 732-7999
Web: www.onssi.com

OnGuard to Ocularis Event Setup 1.1.6.0

00002262015-1712-4.0-1.1.6.0

LEGAL NOTICE

This product manual is intended for general information purposes only, and due care has been taken in its preparation.

Any risk arising from the use of this information rests with the recipient, and nothing herein should be construed as constituting any kind of warranty.

© 2002-2015 On-Net Surveillance Systems, Inc. All rights reserved. OnSSI and the 'Eye' logo are registered trademarks of On-Net Surveillance Systems, Inc. Ocularis, Ocularis Client, Ocularis Client Lite, Ocularis Video Synopsis, NetEVS, NetDVMS, NetDVR, ProSight, NetGuard, NetGuard-EVS, NetSwitcher, NetMatrix, NetCentral, NetTransact, NetPDA and NetCell are trademarks of On-Net Surveillance Systems, Inc. All other trademarks are property of their respective owners.

On-Net Surveillance Systems, Inc. reserves the right to change product specifications without prior notice.

US patent # 8,390,684 B2 for Ocularis Client

Patents Applied For in the U.S. and Abroad

Table of Contents

INTRODUCTION.....	2
GETTING STARTED WITH OCULARIS.....	2
REVIEW ONGUARD MANUALS.....	2
REVIEW OCULARIS MANUALS	2
INSTALLATION & CONFIGURATION	2
ONGUARD INSTALLATION & CONFIGURATION PREREQUISITES	3
MESSAGE QUEUING (MSMQ)	3
ONGUARD SINGLE SIGN-ON USER	3
ONGUARD SERVICES	7
INSTALLING ONGUARD TO OCULARIS EVENT PROXY	8
MESSAGE QUEUING (MSMQ)	8
TO INSTALL THE ONGUARD TO OCULARIS EVENT PROXY	8
ONGUARD TO OCULARIS EVENT PROXY ADMINISTRATION	11
OCULARIS ADMINISTRATOR CONFIGURATION.....	13
ONGUARD ALARM MONITORING.....	14
OCULARIS CLIENT OPERATION	15
CONTACT INFORMATION	16

Introduction

This manual provides detailed instructions for installing and configuring the component to send OnGuard events to Ocularis.

Getting Started with Ocularis

REVIEW ONGUARD MANUALS

- Review the *DataConduIT User Guide* documentation.

Chapter 2 *Getting Started* is very important for setup to enable events to be processed through the *OnGuard to Ocularis Event Proxy*. Completely understand *OnGuard Single Sign-On (SSO) User* as well as the *Authentication, Authorization, Receive Events* and set up of *Using DataConduIT from a Remote Computer* to ensure proper connection of the *OnGuard to Ocularis Event Proxy* to *OnGuard*.

REVIEW OCULARIS MANUALS

- Review the *Ocularis Installation and Licensing Guide* documentation.
- Review the *Ocularis Administration User Manual* documentation.
- Review the *Ocularis Client User Manual* documentation.

INSTALLATION & CONFIGURATION

- Once all Ocularis components are installed, synchronize the date and time between the server and workstations.

OnGuard Installation & Configuration Prerequisites

MESSAGE QUEUING (MSMQ)

Ensure Microsoft Message Queuing is installed on the OnGuard server system.

ONGUARD SINGLE SIGN-ON USER

Create a single sign-on account as per the OnGuard documentation.

1. Open **OnGuard System Administration** → **Administration** → **Directories...**
2. In the **General** tab enter:
 - **Name** – Name of the local account, ex WinLocalAccount
 - **Type** – example: Windows Local Accounts
 - **Hostname** – Computer name where OnGuard is installed, example: TEST-10-224
 - Check **Enable single sign-on** checkbox.

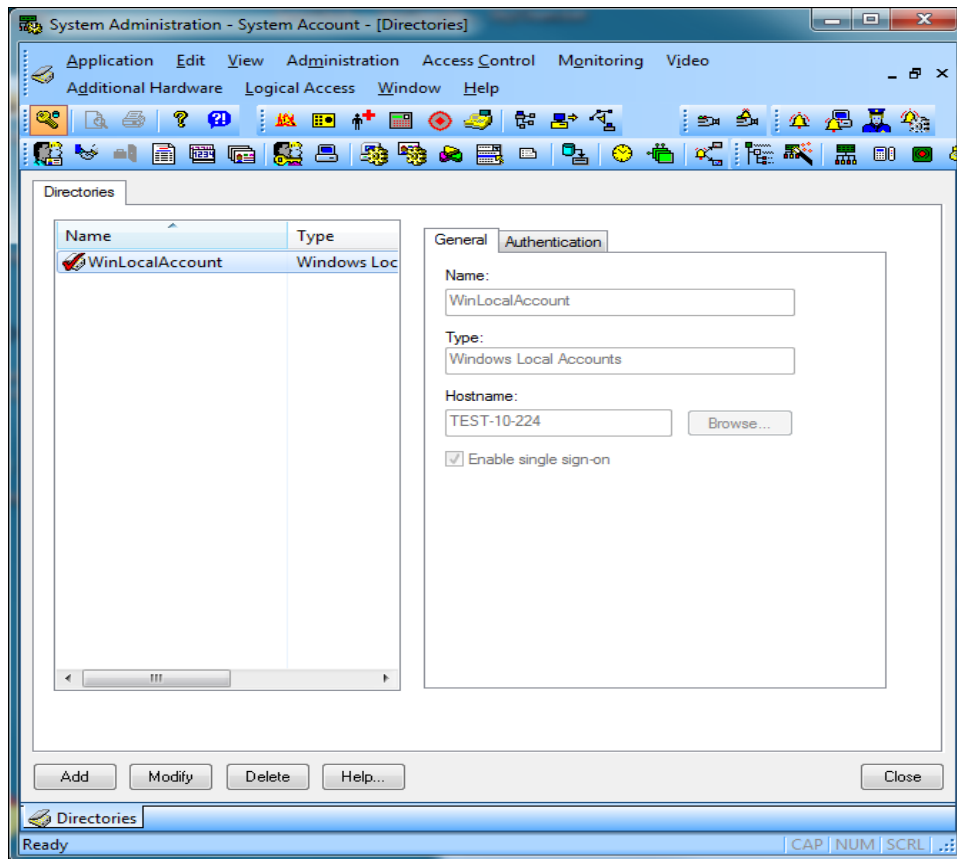


Figure 1 General Tab of Directories

3. In the **Authentication** tab:
 - Click the **Current Windows account** radio button

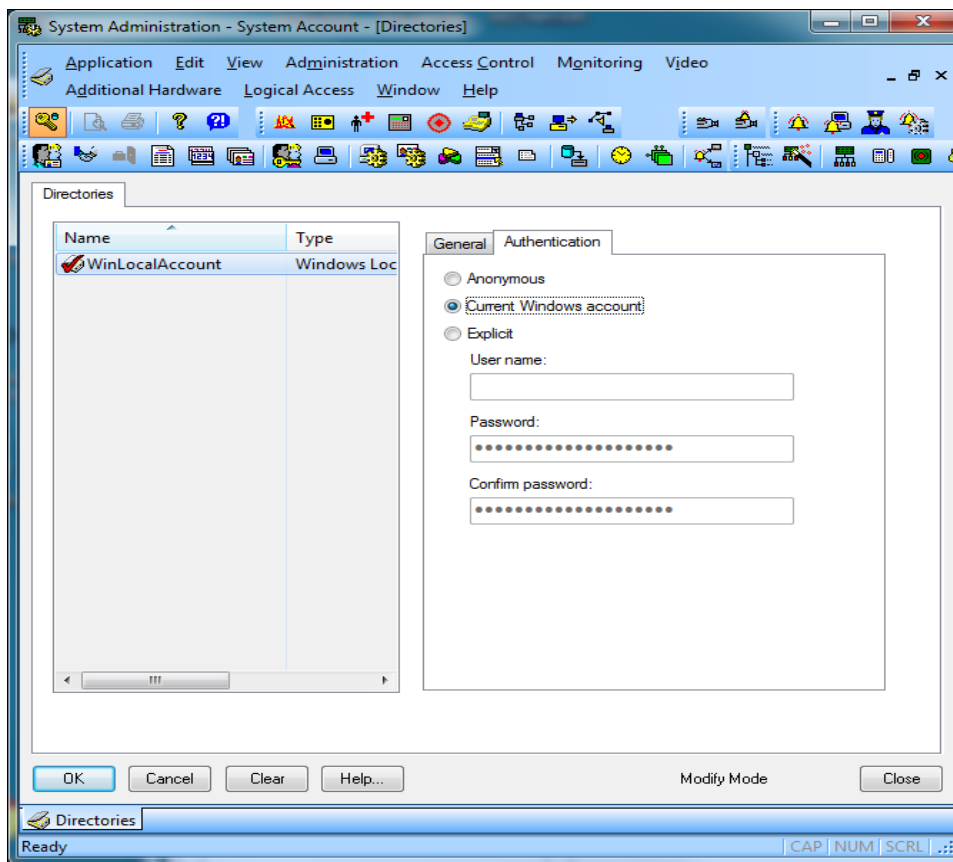


Figure 2 Authentication Tab of Directories

4. Click **Close**.
5. Open **OnGuard System Administration** → **Administration** → **Users...**
6. In the **Users** tab
 - **Link** the Current Windows Account (in this example Administrator) to the **System Account** users, under the **Directory Accounts** tab link the *WinLocalAccount*.

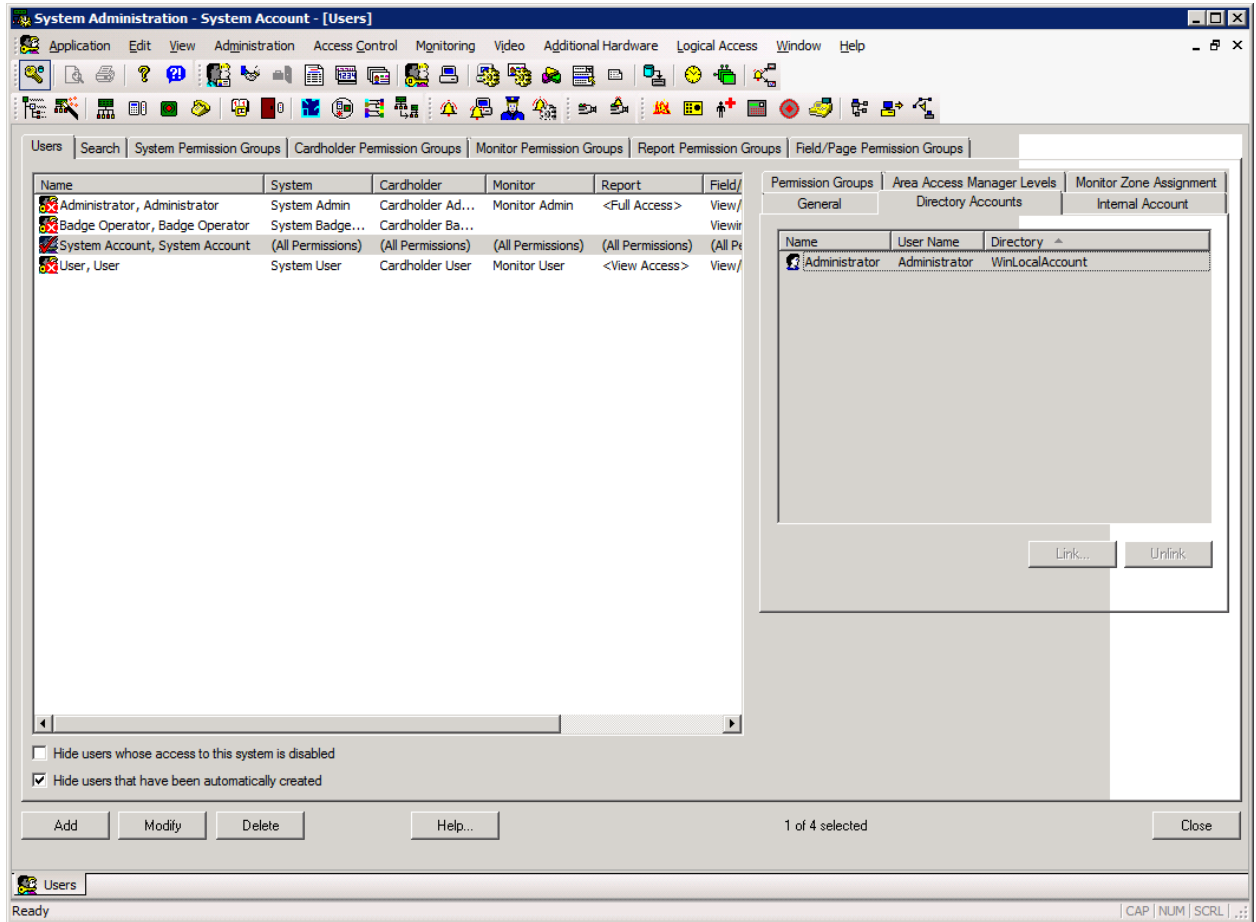


Figure 3 Users Tab of Users

ONGUARD DATACONDUIT

Enable the Dataconduit service to generate software events as per the OnGuard documentation.

1. Open **OnGuard System Administration** → **Administration** → **System Options...**
2. In the **General System Options** tab enter:
 - Under **DataConduit service** check **Generate software events** checkbox.
 - Enter the **Linkage Server host** name. Example: TEST-10-224

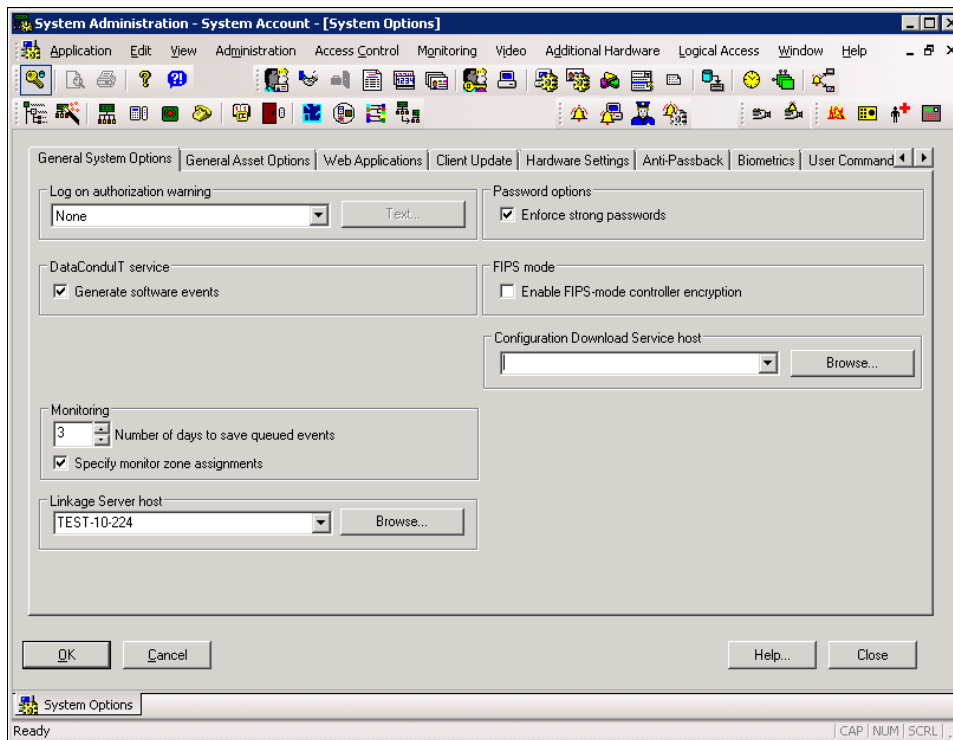


Figure 4 General System Options

3. Click **OK**.

ONGUARD SERVICES

- Check that the following Services are set to Automatic on the OnGuard server machine.
 - LS Linkage Server** service is set to Automatic.
 - LS DataConduIT Service** is set to Automatic.

Name	Description	Stat...	Startup Type	Log On As
LpsSearchSvc	Service responsible for processing video analytics algorithms	Started	Automatic	Local System
LS Client Update Server	The Client Update Server is used to automatically update client works...		Manual	Local System
LS Communication Server	The Communication Server acts as the communication "gateway" for l...		Automatic	Local System
LS Config Download Service	This service is used to propagate configuration changes down to the ...		Manual	Local System
LS DataConduIT Message Que...	The LS DataConduIT Message Queue Server is an adapter that works...		Manual	Local System
LS DataConduIT Service	The DataConduIT Service is a platform for integrating with IT system...	Started	Automatic	.\administrator
LS DataExchange Server	The DataExchange Server is used to exchange database information ...		Manual	Local System
LS Global Output Server	The Global Output Server (GOS) is used to send output to any suppor...		Manual	Local System
LS ID Allocation	The ID Allocation Service is used to manage pre-allocated IDs across ...		Manual	Local System
LS License Server	The License System Server is run on servers only, and controls which ...	Started	Automatic	Local System
LS Linkage Server	The Linkage Server is responsible for directing automatic email/paging...	Started	Automatic	Local System
LS Login Driver	The Login Driver is a service that is used to change the database pas...	Started	Automatic	Local System
LS PTZ Tour Server	LS PTZ Tour Server		Manual	Local System
LS Replicator	Replicator is run on either a Enterprise Regional Server or a Distribute...		Manual	Local System
LS Video Archive Server	The Video Archive Server is a system service that is responsible for ar...		Manual	Local System
Message Queuing	Provides a messaging infrastructure and development tool for creatin...	Started	Automatic	Network Service
Message Queuing Triggers	Provides rule-based monitoring of messages arriving in a Message Qu...	Started	Automatic	Network Service
Microsoft .NET Framework NG...	Microsoft .NET Framework NGEN		Disabled	Local System
Microsoft .NET Framework NG...	Microsoft .NET Framework NGEN		Disabled	Local System

Figure 5 Windows Services

- Modify the **LS DataConduIT Service** to be executed as the same user that was created in *OnGuard Single Sign-On User* on page 3. For example: **.\Administrator**

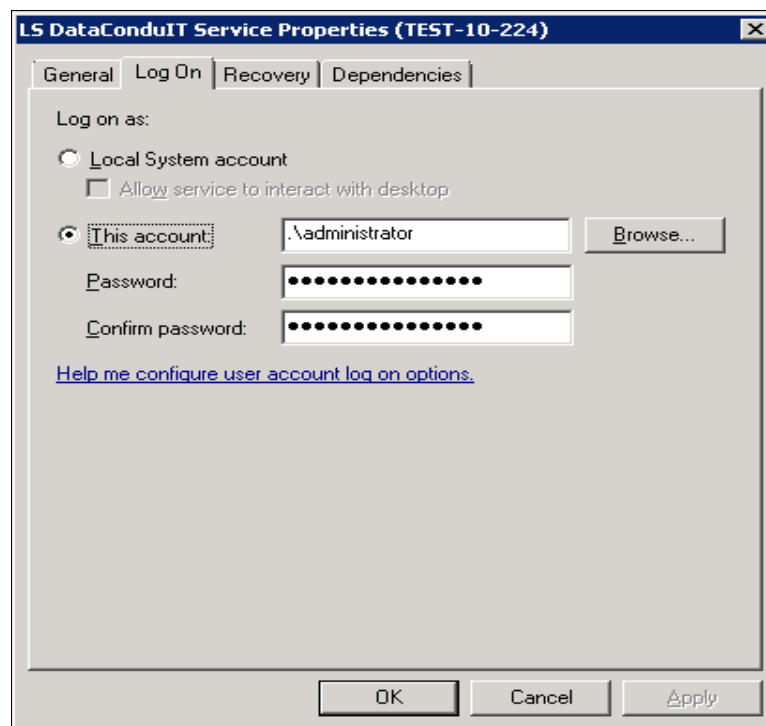


Figure 6 User for LS DataConduIT

Installing OnGuard to Ocularis Event Proxy

- Refer to the system requirements defined on the OnSSI website for hardware specifications for Ocularis.
- Follow the procedure below when installing a new system or upgrading existing copies of this event proxy.

MESSAGE QUEUING (MSMQ)

Ensure Microsoft Message Queuing is installed on the event proxy system.

TO INSTALL THE ONGUARD TO OCULARIS EVENT PROXY

These instructions assume that you have installed Ocularis and are located at the system on which you wish to install the **OnGuard to Ocularis Event Proxy**. This can be any system with network connectivity to both the Ocularis Base and OnGuard server.

1. Double click the file **Setup.exe** to begin the installation process.

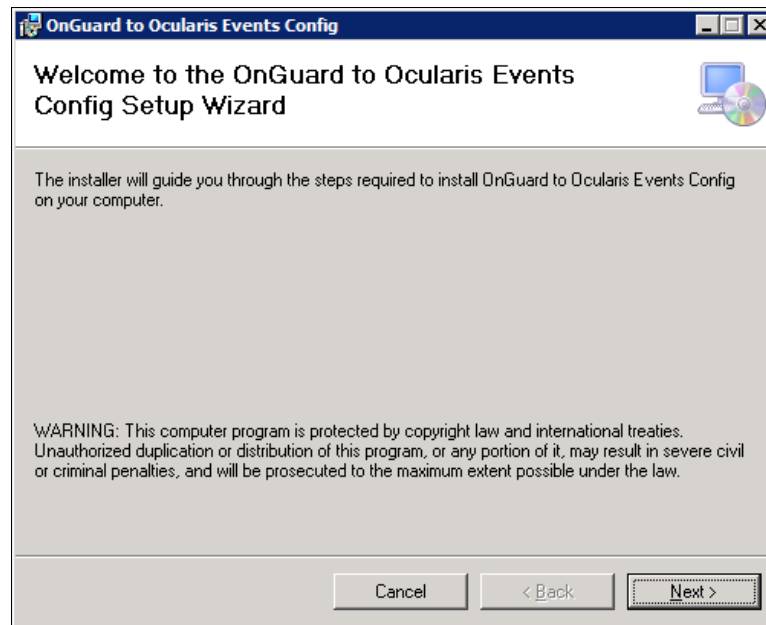


Figure 7 OnGuard to Ocularis Events Setup Wizard

2. At the *Welcome* screen, click **Next**.

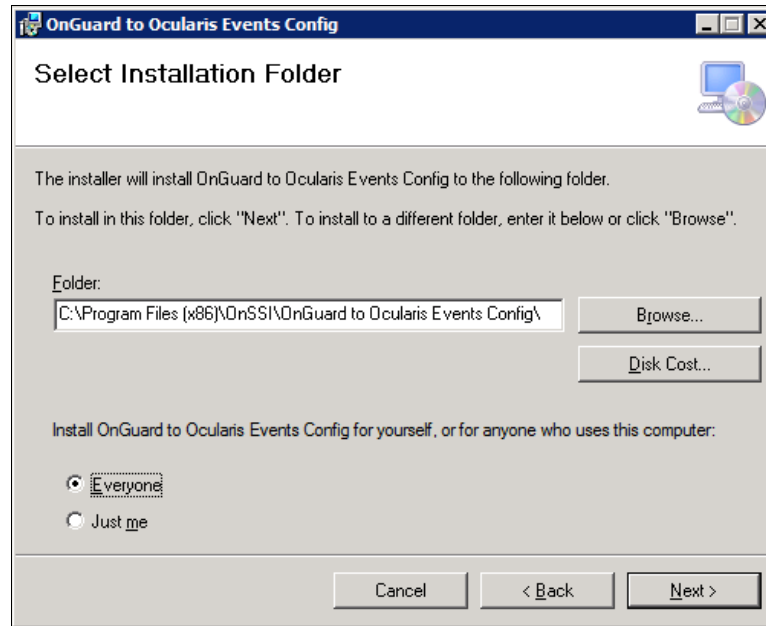


Figure 8 Select Installation Folder

3. Use the default folder or enter another location for the installation files. Select for **Everyone** or **Just me**. Click **Next** to continue.

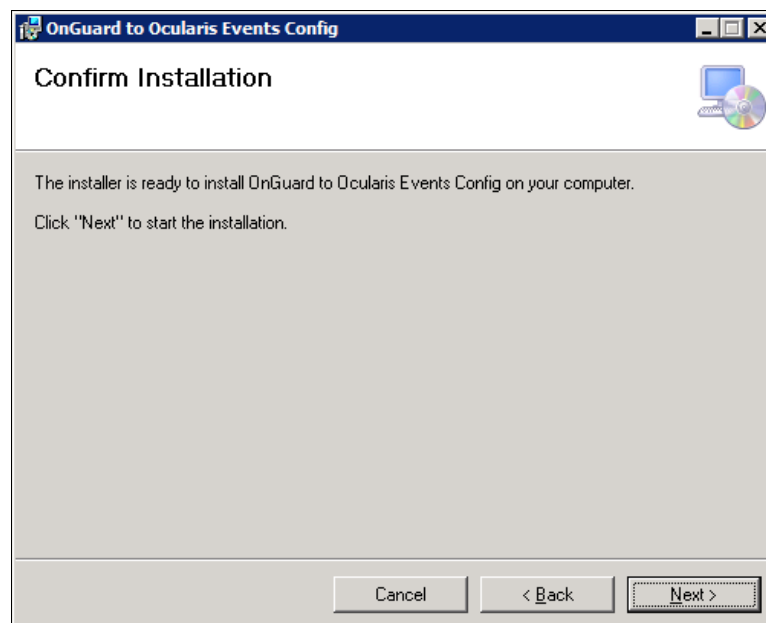


Figure 9 Confirm the Installation

4. On the *Confirm Installation* page, click **Next** to start the installation.

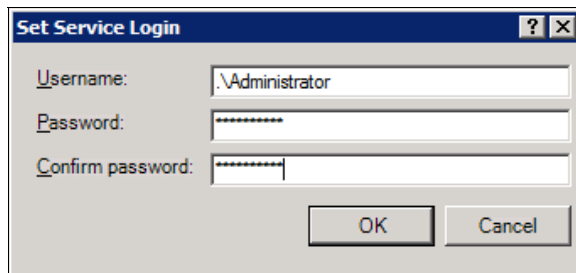


Figure 10 Service Login

- On the **Set Service Login** screen, enter the username and password for the OnGuard to Ocularis Event Proxy service. Enter the **Single sign-on** user created on page 3 (*OnGuard Single Sign-On User*).

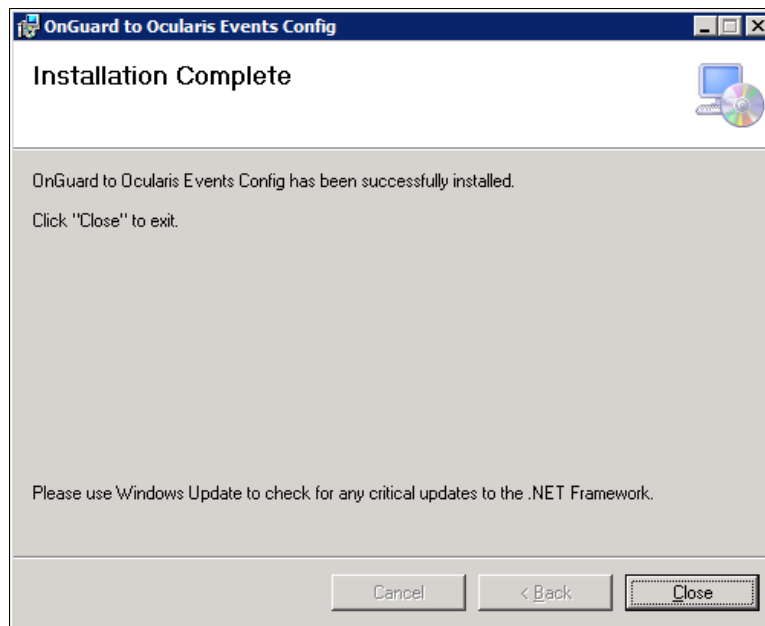
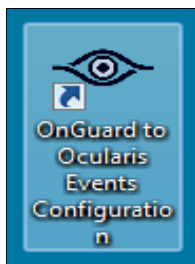


Figure 11 Installation Complete

- Click **Close**.

An icon to launch the proxy administrator will be appear on the desktop. This icon is labeled 'OnGuard to Ocularis Events Configuration'.



OnGuard to Ocularis Event Proxy Administration

This process is used to route events from an OnGuard server to the Ocularis Base.

1. Launch the **OnGuard to Ocularis Events Configuration** application from the desktop of the machine on which it was installed.
2. In **OnGuard** section of the **Settings** tab:
 - a. if the proxy is installed on the OnGuard Server machine, the **Host**, **Username** and **Password** can remain blank
 - b. if the proxy is installed on a remote machine, enter the OnGuard Server **Host** IP Address, the Single Sign On **Username** and Single Sign On **Password**.
3. In the **Ocularis** section, enter the Ocularis Base IP address in the **Host** field.
4. For the **Source Name**, enter a label for the OnGuard installation as you would like it to appear in the *Ocularis Administrator* Server/Events tab.
5. Click **Save**.

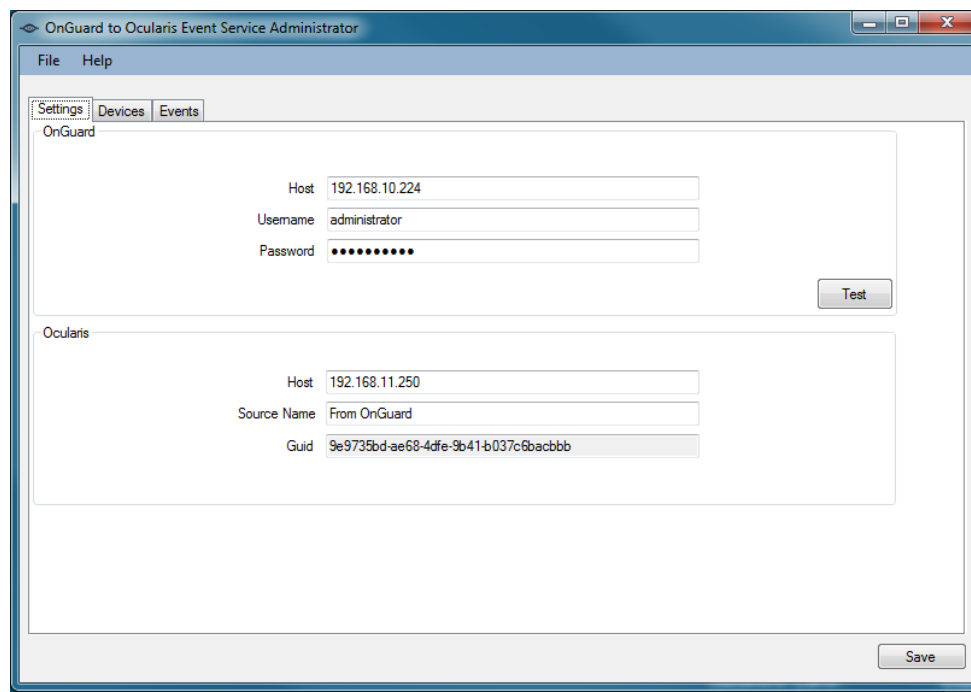
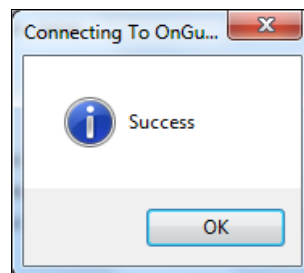


Figure 12 Configure Settings Tab

6. Click the **Test** button. A pop-up with a **Success** message appears when a successful connection to OnGuard is made.



In the **Devices** tab, there are Panel(s) defined in the list.

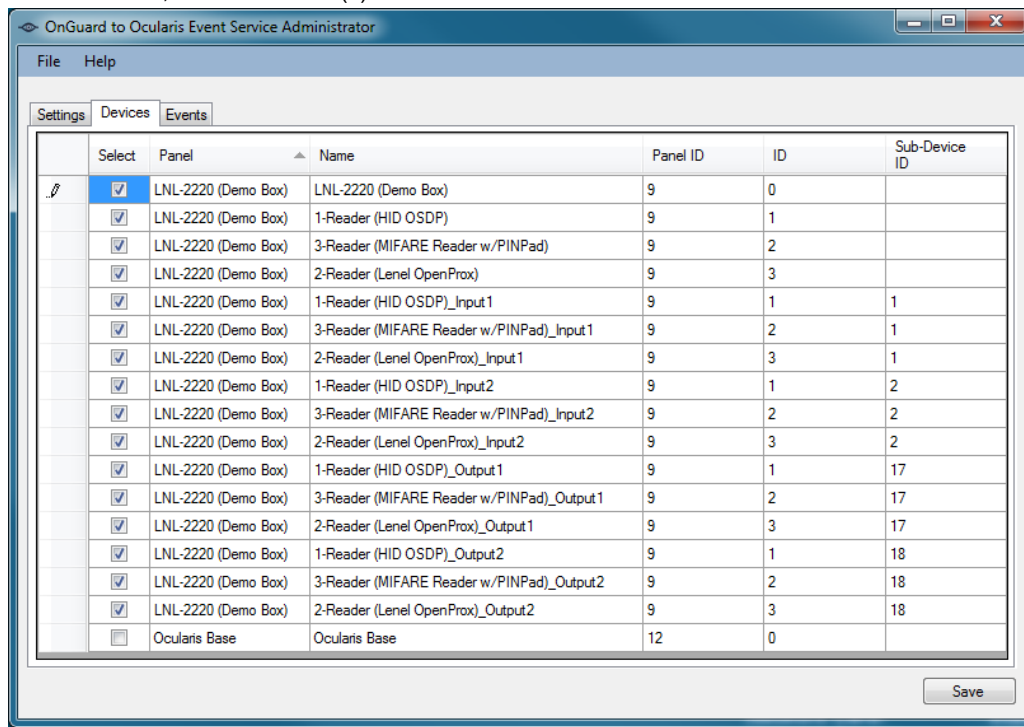


Figure 13 Configure Devices Tab

Select the desired Panel(s) and click **Save**.

- In the **Events** tab, select the Event Type(s) that you want OnGuard to send to Ocularis.

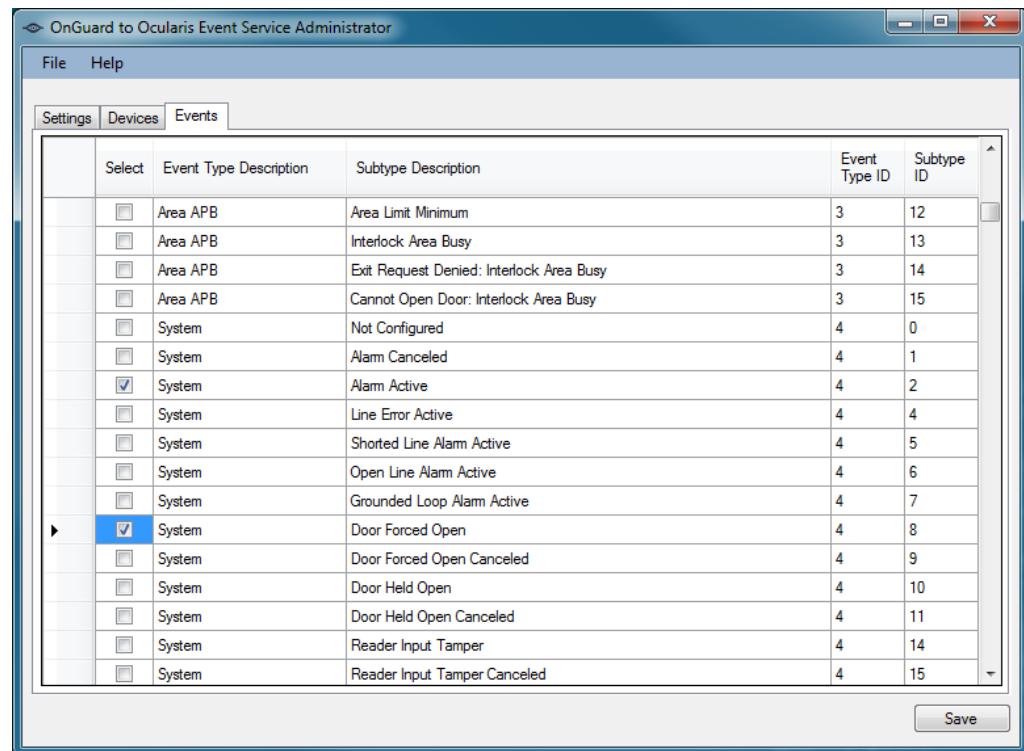


Figure 14 Configure Events Tab

- Click **Save**.

Ocularis Administrator Configuration

Some configuration is required on the Ocularis Base. Use the *Ocularis Administrator* application to configure the Base.

1. Log into **Ocularis Administrator**.

OnGuard events will appear under the **Events** pane of the **Server / Events** tab.

2. Follow the standard procedure to map Ocularis cameras to OnGuard events as you would any other events. Ensure you have the appropriate privileges to any cameras used in the mapping and that the events are included in corresponding Distribution Groups.

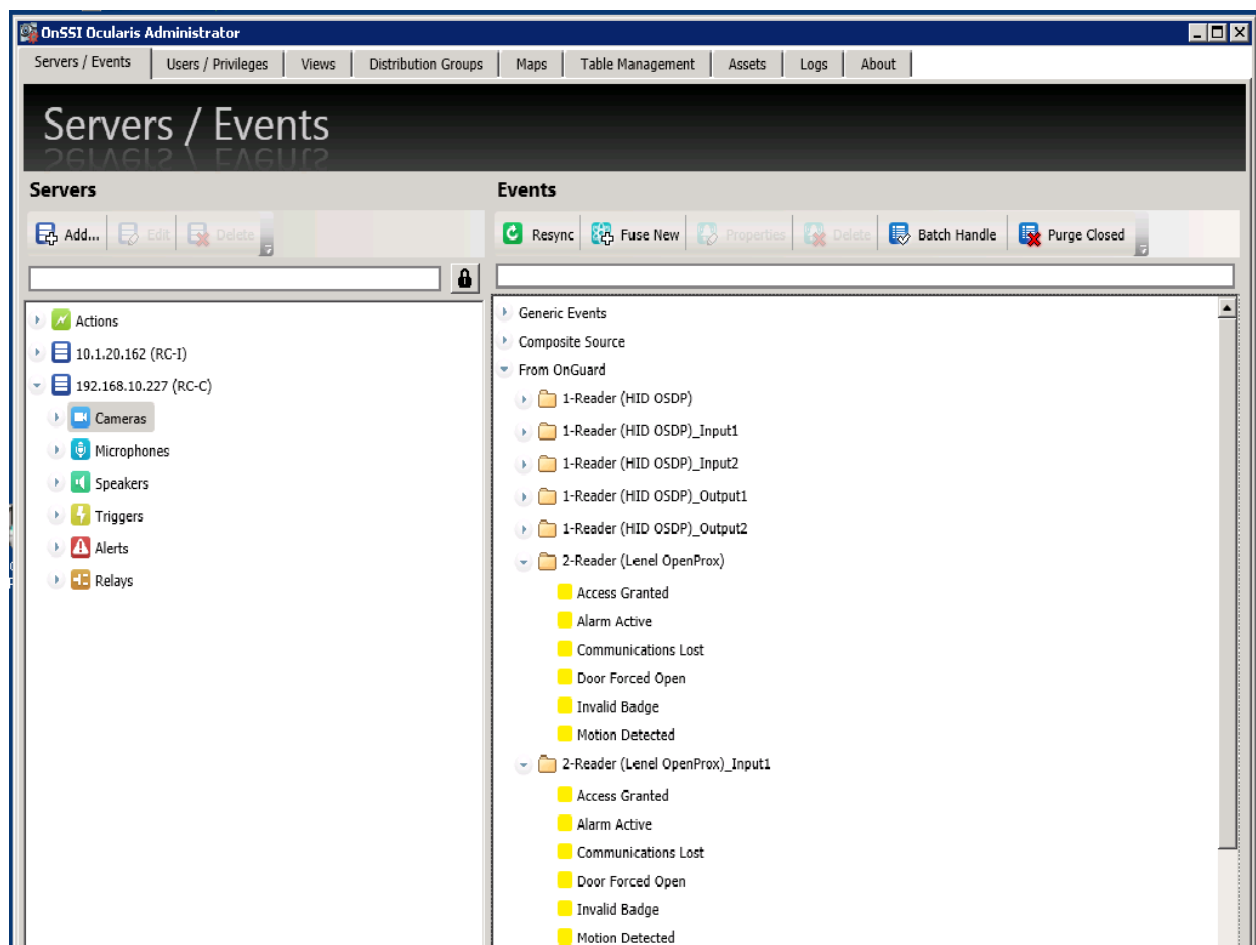


Figure 15 Ocularis Administrator

For more information on Ocularis events and their configuration, review the *Ocularis Administrator User Manual*.

OnGuard Alarm Monitoring

Main Alarm Monitor

Alarm Description	Time/Date	Controller	Device	Input/Output	Card	Priority
Door Held Open	1:18:13 PM 9/8/2014	LNL-2220 (Demo Box)	2-Reader (Lenel OpenProx)	None		150
Granted Access	1:17:53 PM 9/8/2014	LNL-2220 (Demo Box)	2-Reader (Lenel OpenProx)	None	(102654)	050
Door Forced Open	1:17:33 PM 9/8/2014	LNL-2220 (Demo Box)	3-Reader (MIFARE Reader w/PINPad)	None		200
Alarm Active	1:16:21 PM 9/8/2014	LNL-2220 (Demo Box)	3-Reader (MIFARE Reader w/PINPad)	Back Door (Input 2)		200
Alarm Restored	1:16:17 PM 9/8/2014	LNL-2220 (Demo Box)	2-Reader (Lenel OpenProx)	PANIC (Input 3)		100
Alarm Restored	1:16:05 PM 9/8/2014	LNL-2220 (Demo Box)	3-Reader (MIFARE Reader w/PINPad)	Front Door (Input 1)		100
Invalid Facility Code	1:15:57 PM 9/8/2014	LNL-2220 (Demo Box)	1-Reader (HID OSDP)	None	Facility code (123)	150
Invalid Facility Code	1:15:46 PM 9/8/2014	LNL-2220 (Demo Box)	3-Reader (MIFARE Reader w/PINPad)	None	Facility code (26640)	150
Alarm Active	1:15:34 PM 9/8/2014	LNL-2220 (Demo Box)	2-Reader (Lenel OpenProx)	PANIC (Input 4)		200
Door Held Open Restored	1:15:25 PM 9/8/2014	LNL-2220 (Demo Box)	2-Reader (Lenel OpenProx)	None		100
Door Forced Open Restored	1:15:25 PM 9/8/2014	LNL-2220 (Demo Box)	2-Reader (Lenel OpenProx)	None		100

Selected alarm: Sort criteria: Time/Date (Descending) Pending: 4 | Total: 11

System Status Tree (all devices)

- Default Zone
 - LNL-2220 (Demo Box) (Firmware Revision: 1.176 [Not Current]; Panel options mismatch)
 - 1-Reader (HID OSDP) (access mode: pin or card)
 - Armed
 - 2-Reader (Lenel OpenProx) (access mode: card only)
 - PANIC (Input 3)
 - PANIC (Input 4)
 - Alarm
 - 3-Reader (MIFARE Reader w/PINPad) (access mode: pin or card)
 - Front Door (Input 1)
 - Back Door (Input 2)
 - Door
 - Function Lists
 - Ocularis Base (Firmware Revision: 4.1.0.172)
 - Back Door (227-12.114)
 - Back Parking Lot (227-12.148)
 - Customer Service Window (227-10.165)
 - Customer Service Window (227-11.242)
 - Front Door (227-12.117)
 - Front Parking Lot (227-12.115)
 - Parking Entrance (227-20.165)
 - Parking Exit (227-11.102)

Figure 16 Alarm Monitoring

Ocularis Client Operation

Log into the **Ocularis Client**. Display a view that contains a **Blank Screen**. When an OnGuard or any other configured event occurs, any combination of the following may result:

- Video from an associated camera will display in the Blank Screen
- Sound configured to the event may be played
- An email may be sent to authorized recipients
- A PTZ camera may be moved to a configured preset
- ASCII or binary data from Oculars may be sent to a designated recipient
- HTTP requests may be generated

For more information on Ocularis events and their configuration, review the *Ocularis Administrator User Manual*.

Contact Information

On-Net Surveillance Systems (OnSSI)

One Blue Plaza

7th Floor

P.O. Box 1555

Pearl River, NY 10965

Website:	www.onssi.com	
General:	info@onssi.com	845.732.7900
Fax:		845.732.7999
Sales Support:	sales@onssi.com	845.732.7900 x 1
PreSales Support	se@onssi.com	845.732.7900 x 2
Technical Support:	support@onssi.com	845.732.7900 x 3
Training:	training@onssi.com	845.732.7900 x 4
Marketing:	marketing@onssi.com	845.732.7900 x 5