



# Ocularis

---

## OnSSI S2 Events Service

*NetBox to Ocularis Proxy*

*Installation & Configuration Guide*



**On-Net Surveillance Systems, Inc.**  
One Blue Hill Plaza, 7<sup>th</sup> Floor, PO Box 1555  
Pearl River, NY 10965  
Phone: (845) 732-7900 | Fax: (845) 732-7999  
[www.onssi.com](http://www.onssi.com)



**S2 Security Corporation**  
One Speen St. Suite 300  
Framingham, MA 01701  
S2 Support: 508 663-2505  
[www.s2sys.com](http://www.s2sys.com)

*Ocularis-NetBox 5.6.49.1*

*00001302019-0959-5.6.49.1*

**Legal Notice**

This product manual is intended for general information purposes only, and due care has been taken in its preparation.

Any risk arising from the use of this information rests with the recipient, and nothing herein should be construed as constituting any kind of warranty.

© 2002-2019 On-Net Surveillance Systems, Inc. All rights reserved. OnSSI and the 'Eye' logo are registered trademarks of On-Net Surveillance Systems, Inc. Ocularis, Ocularis Client, Ocularis Client Lite, Ocularis Video Synopsis, NetEVS, NetDVMS, NetDVR, ProSight, NetGuard, NetGuard-EVS, NetSwitcher, NetMatrix, NetCentral, NetTransact, NetPDA and NetCell are trademarks of On-Net Surveillance Systems, Inc. All other trademarks are property of their respective owners.

On-Net Surveillance Systems, Inc. reserves the right to change product specifications without prior notice.

US patent # 8390684 B2 for Ocularis Client

Patents Applied For in the U.S. and Abroad

# Table of Contents

- Introduction ..... 5
- Getting Started with S2 NetBox and OnSSI Ocularis..... 5
  - Prerequisites ..... 5
  - Review S2 NetBox Manuals ..... 5
  - Review OnSSI Ocularis Manuals..... 5
- S2 NetBox System Description..... 6
- Ocularis System Description ..... 7
- OnSSI S2 Events Service Install Process ..... 8
  - Prerequisites ..... 8
  - Install the OnSSI S2 Events Service ..... 8
- OnSSI S2 Events Configuration..... 11
  - Steps to configure the OnSSI S2 Events Service..... 12
  - Description of OnSSI S2 Events Service..... 12
    - S2 Events Settings ..... 12
    - Service Control ..... 12
    - Settings..... 12
    - Configuration ..... 12
    - Devices ..... 13
    - Events..... 13
    - View Log..... 13
    - Exit..... 13
- Additional Setup..... 14
  - Setup and verify Video Motion Detection (VMD) from Ocularis ..... 14
  - Setup and verify video recording actions from S2 NetBox ..... 14
  - Setup and verify PTZ actions from S2 NetBox ..... 14
  - Setup and verify preset actions from S2 NetBox ..... 14
- Miscellany ..... **Error! Bookmark not defined.**
  - Appendix on Network Port Setup ..... **Error! Bookmark not defined.**

Contact Information..... 15

    On-Net Surveillance Systems (OnSSI) ..... 15

## Introduction

This manual provides detailed instructions for installing and configuring the **NetBox to Ocularis Event Proxy** to receive **S2 NetBox** events into **OnSSI Ocularis**. This assumes you have working knowledge of **S2 NetBox** and **OnSSI Ocularis**.

This document is specifically for:

- S2 NetBox (v4.9.08 and Software Revision: 81956)
- OnSSI Ocularis 5.6 (v5.6.0.341)
- OnSSI S2 Events Service Installer 5.6.exe

The majority of the testing was completed on Windows Server 2008 R2 and Windows 10 using Microsoft Internet Explorer 11.

## Getting Started with S2 NetBox and OnSSI Ocularis

### Prerequisites

- Ocularis requires Message Queuing (MSMQ). Ensure this is installed on the Server and Client systems.

### Review S2 NetBox Manuals

- Review the S2 NetBox documentation:
  - Check S2 NetBox web page for all documentation.
  - Check Hardware and Software requirements.

### Review OnSSI Ocularis Manuals

- Review the OnSSI Ocularis documentation:
  - Ocularis Installation and Licensing Guide
  - Ocularis Administration User Manual
  - Ocularis Client User Manual

Once all **S2 NetBox** and **Ocularis** components are installed, please synchronize the date and time for all systems being used.

## **S2 NetBox System Description**

S2 NetBox is a full-featured, web-based access control and event monitoring system.

- Web Interface - Delivers browser-based, unified system management and administration.
- Video Integration - Works with OnSSI Ocularis video management system.

## Ocularis System Description

The Ocularis system is considered to be:

- IP Video Cameras
- Ocularis Recorder - Master Core, Device Manager and Storage
- Ocularis Recorder Proxy - required for Events and Recorder settings
- Ocularis Base / Administrator
- Ocularis Client
- Ocularis Media Server (OMS) – **Must be installed on the Ocularis Base system**

### Ocularis System Description

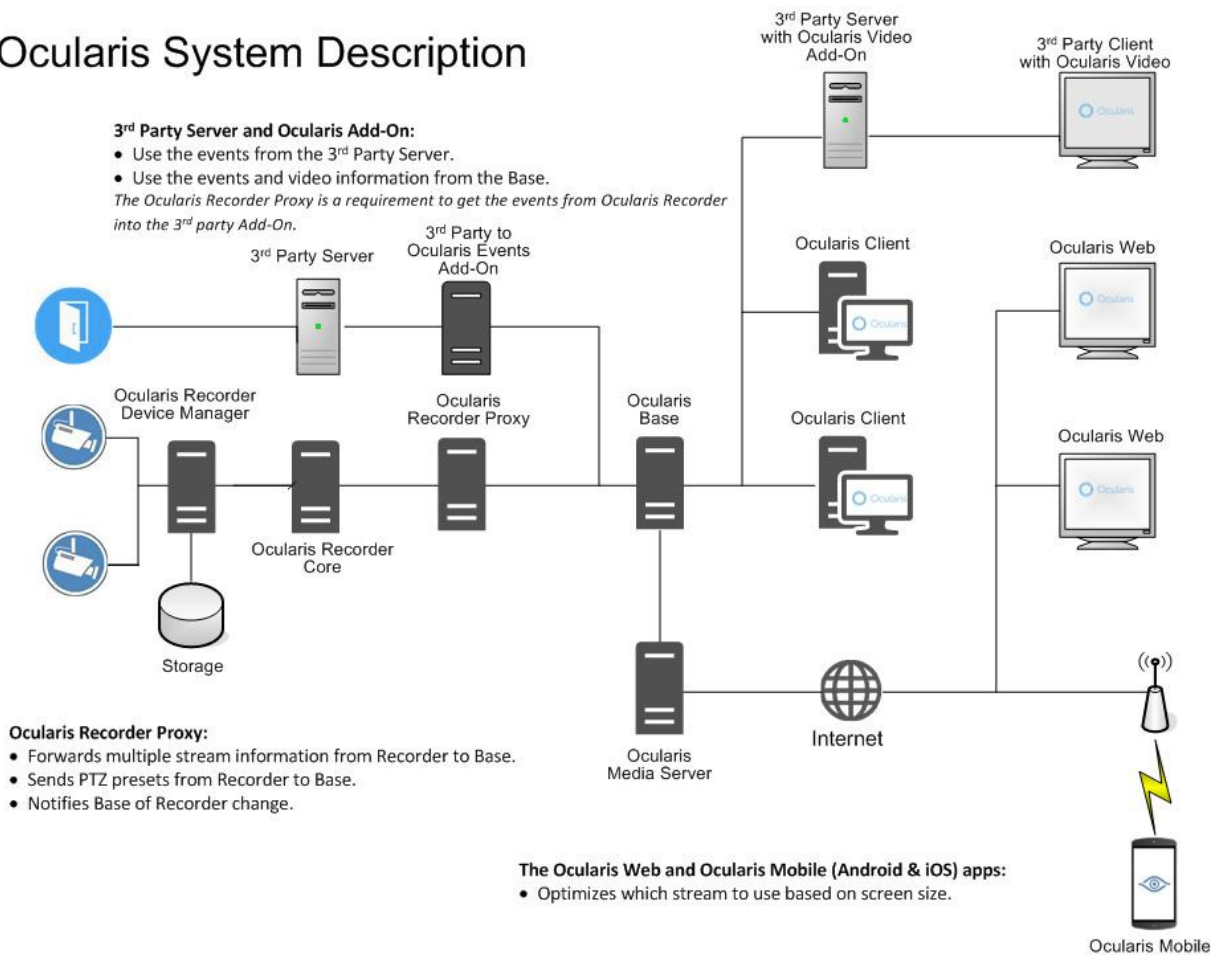


Figure 1 – Ocularis

## OnSSI S2 Events Service Install Process

### Prerequisites

#### Install the OnSSI S2 Events Service

1. This Add-On should be installed on the Ocularis Base / Media Server system.
2. Place the **OnSSI S2 Control Service Installer 5.6.exe** on the desktop.

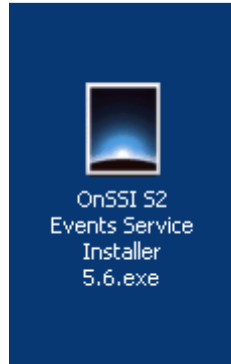


Figure 2 – OnSSI S2 Events Service Installer 5.6

3. Double-click the **OnSSI S2 Control Service Installer 5.6.exe** to start the installation process.



Figure 3 – Welcome - OnSSI S2 Events Service Installer 5.6

4. Click the **Next >** button.



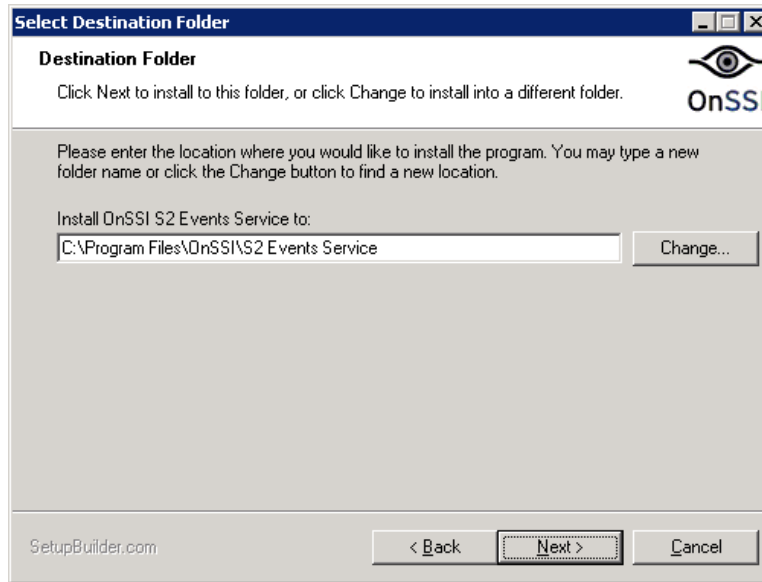


Figure 4 – Select Destination Folder - OnSSI S2 Events Service Installer 5.6

5. Select where to install, use the default location (C:\Program Files\OnSSI\S2 Events Service) or **Change...** button to browse or enter another location for the installation files.

Use the **< Back** button if changes are needed. Click **Next >** to continue.

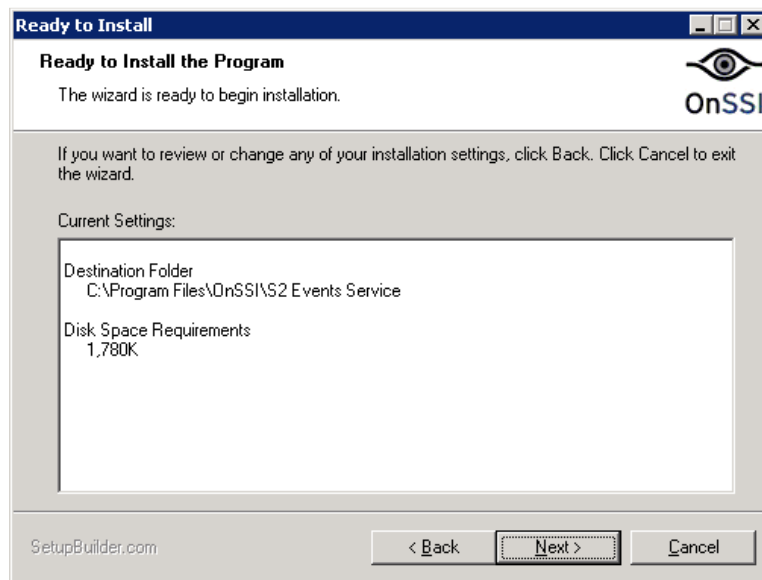


Figure 5 – Ready to Install - OnSSI S2 Events Service Installer 5.6

6. Review the information, use the **< Back** button if changes are needed.

Click **Next >** to continue.

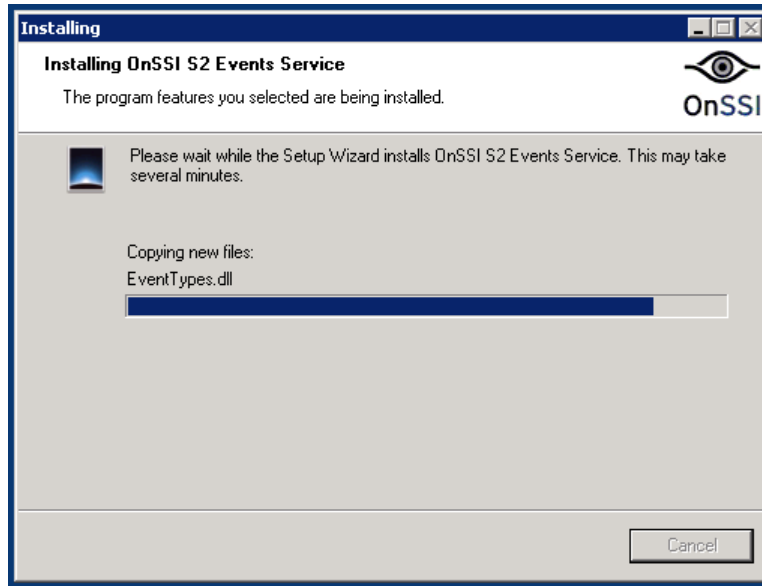


Figure 6 – Installing - OnSSI S2 Events Service Installer 5.6

7. The Add-On will install.



Figure 7 – Finish - OnSSI S2 Events Service Installer 5.6

8. Click the **Finish** button to complete the installation.

## OnSSI S2 Events Configuration

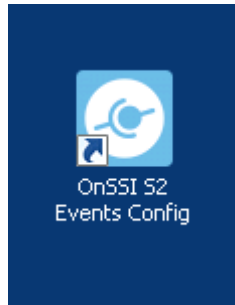


Figure 8 – OnSSI S2 Control Config

1. Double-click on the **OnSSI S2 Events Config** icon to start the configuration process (runConfig.bat).

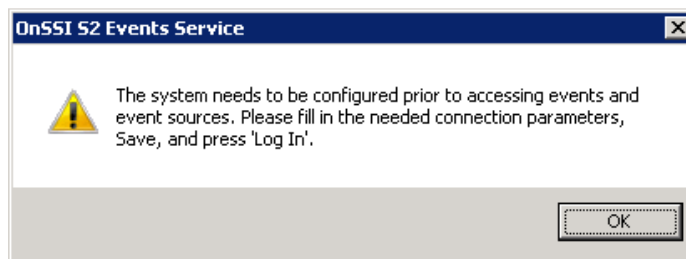


Figure 9 – OnSSI S2 Events Service Warning dialog

Click **OK**.

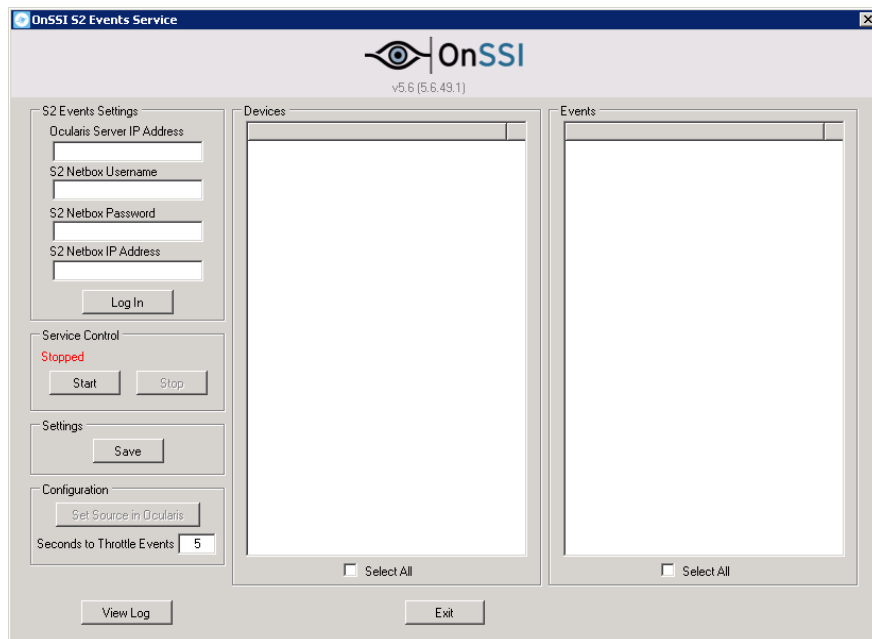


Figure 10 – OnSSI S2 Events Service configuration dialog

## Steps to configure the OnSSI S2 Events Service

1. Fill in the **S2 Events Settings** edit boxes with the connection parameters for the local systems.
2. Click **Log In**, the Service will connect to the **S2 NetBox** and retrieve configured **Devices** from **S2 NetBox**. It will also retrieve any configured **User Events**. Once the Service is configured, the Configuration dialog will attempt to log into the **S2 NetBox** when the Configuration dialog is started.
3. Select the desired **Devices**. The **Events** pane will populate.
4. Select the desired **Events**.
5. Adjust the **Seconds to Throttle Events**. This is the seconds between like alarms in which the event will not be sent to the Ocularis system. Default is five (5) seconds.
6. Click **Save**.
7. Click **Set Source in Ocularis**, this will send the event source setup of the **Devices** and **Events** selected to Ocularis to make it aware of **S2 NetBox** events.
8. Click **Start** under **Service Control** to start the **OnSSI S2 Events Service**. To view logging information, click **View Log** prior to starting the Service.
9. **Service Control** shows as **Started**.
10. Click **Exit** to close the dialog.

## Description of OnSSI S2 Events Service

### S2 Events Settings

1. **Ocularis Server IP Address**, this is the address of the OMS.
2. **S2 NetBox Username**, this is the address of the OMS.
3. **S2 NetBox Password**, this is the address of the OMS.
4. **S2 NetBox IP Address**, this is the address of the OMS.
5. Click **Log In**, the Service will connect to the **S2 Netbox** and retrieve configured devices and available **S2 NetBox** events. It will also retrieve any configured user events. Once the Service is configured, the Configuration dialog will attempt to log into the S2 NetBox when the Configuration dialog is started.

### Service Control

1. Click **Start** to start the service.
2. Click **Stop** to stop the service.

### Settings

1. Click **Save** to save the Ocularis Server Connection Settings. This will also restart the service.

### Configuration

1. **Set Source in Ocularis** - will send the source setup message to Ocularis to show the Events in Ocularis Administrator.

2. **Seconds to Throttle Events** - This is the seconds between like alarms in which the event will not be sent to the Ocularis system. Default is five (5) seconds.

### Devices

1. Available devices from S2 NetBox.
2. Select All checkbox will select all items.

### Events

1. Available events from S2 NetBox.
2. Select All checkbox will select all items.

### View Log

1. Click the **View Log** button to observe log entries. This can be useful in the rare case a problem arises.

### Exit

1. Click the **Exit** button to close the dialog.

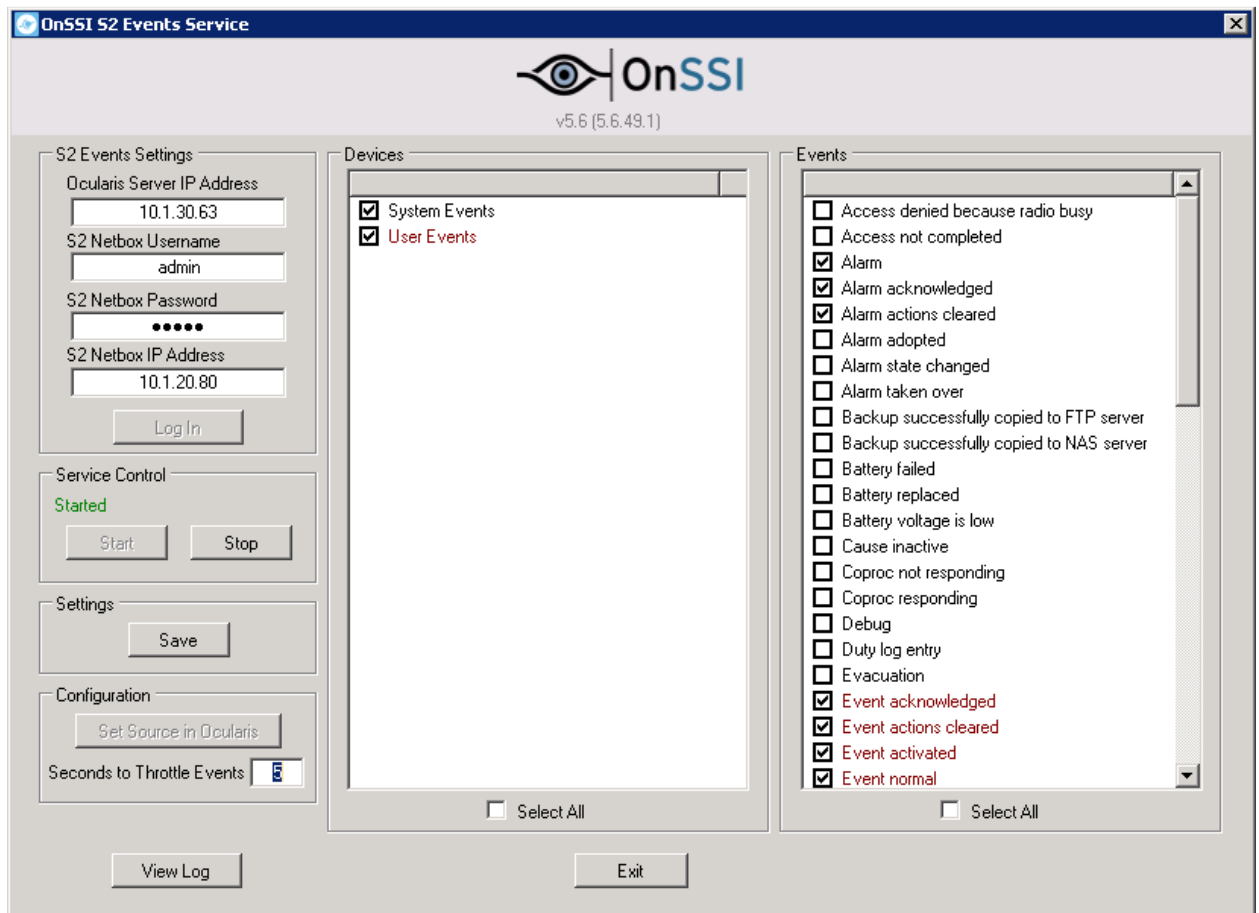


Figure 11 – OnSSI S2 Events Service configuration dialog – Service Started

## Additional Setup

### Setup and verify Video Motion Detection (VMD) from Ocularis

1. Ensure that you have configured VMD events on the Ocularis Recorder and Ocularis Base / Media Server system. You can set the field of motion and sensitivity per camera.
2. Using Microsoft Internet Explorer, log into the **S2 NetBox** using the **S2 NetBox – System Administration** web interface.
3. Select **Configuration : Alarms : Events** and define an S2 event.
4. Select **Configuration : Alarms : Virtual Inputs** and assign your S2 event to an Ocularis connected camera **Video Motion Event**. Make sure the **Virtual Input** is **Always Armed** or using a currently active time specification. Also verify that both the **Virtual Input** and the **Video Motion Event** are **Enabled**.
5. Select **Monitor : Monitoring Desktop** and create motion on that camera.
6. Verify that your S2 event was triggered.

### Setup and verify video recording actions from S2 NetBox

1. Using Microsoft Internet Explorer, log into the **S2 NetBox** using the **S2 NetBox – System Administration** web interface.
2. Select **Configuration : Alarms : Events** and define an S2 event with a **Record Video** action. Be sure to select an Ocularis connected camera.
3. Assign a trigger to this record video event. You can select **Configuration : Alarms : Inputs** and assign the event to the **Off-normal Event**, or you can select **Configuration : Access Control : Portals** and assign the event to the **System-wide : Held** state of a portal.
4. Select **Monitor : Monitoring Desktop** and trigger the event.
5. Verify that the event was triggered and click the video icon to view the recorded video.

### Setup and verify PTZ actions from S2 NetBox

1. Using Microsoft Internet Explorer, log into the **S2 NetBox** using the **S2 NetBox – System Administration** web interface.
2. Select PTZ camera.
3. Move the camera with PTZ commands. Verify that the PTZ move was triggered.

### Setup and verify preset actions from S2 NetBox

1. Using Microsoft Internet Explorer, log into the **S2 NetBox** using the **S2 NetBox – System Administration** web interface.
2. Select PTZ camera with configured presets.
3. Move the camera with preset commands. Verify that the preset move was triggered.

## Contact Information

### **On-Net Surveillance Systems (OnSSI)**

One Blue Plaza

7th Floor

P.O. Box 1555

Pearl River, NY 10965

Website:	<a href="http://www.onssi.com">www.onssi.com</a>	
General:	<a href="mailto:info@onssi.com">info@onssi.com</a>	845.732.7900
Fax:		845.732.7999
Sales Support:	<a href="mailto:sales@onssi.com">sales@onssi.com</a>	845.732.7900 x 1
PreSales Support	<a href="mailto:se@onssi.com">se@onssi.com</a>	845.732.7900 x 2
Technical Support:	<a href="mailto:support@onssi.com">support@onssi.com</a>	845.732.7979
Training:	<a href="mailto:training@onssi.com">training@onssi.com</a>	845.732.7900 x 4
Marketing:	<a href="mailto:marketing@onssi.com">marketing@onssi.com</a>	845.732.7900 x 5