

RECON⁵

Quick Start Guide

RecOn5 NVR & RecOn5 Server



Table of Contents

APPLIANCE HARDWARE	1
SETTING UP A SYSTEM	3
FOR THE RECON5 SERVER	4
FOR THE RECON5 NVR	4
LICENSE OCULARIS BASE	5
LICENSE THE RECORDER	8
LOGIN TO OCULARIS ADMINISTRATOR	13
CONFIGURE SETTINGS IN OCULARIS RECORDER PROXY	15
INSTALL OPTIONAL COMPONENT FOR OCULARIS WEB OR OCULARIS MOBILE	19
CREATE WINDOWS RECOVERY IMAGE	19
OCULARIS COMPONENT GLOSSARY	20

WHAT'S INCLUDED

The following materials are included in the box:

RECON5 UNIT

POWER CORD

RAILS (FOR RACKMOUNT UNIT ONLY)

You will need to supply your own:

MONITOR

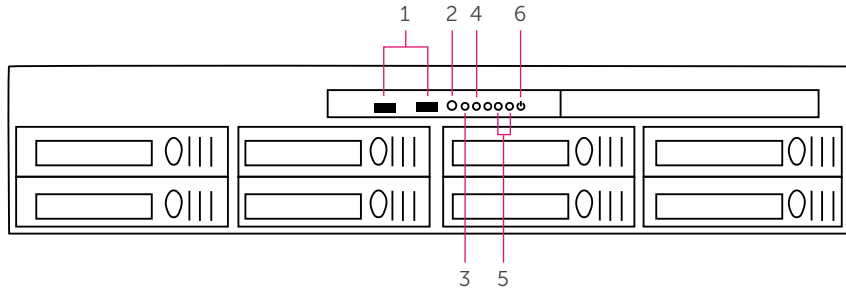
CAMERAS

MOUSE

KEYBOARD

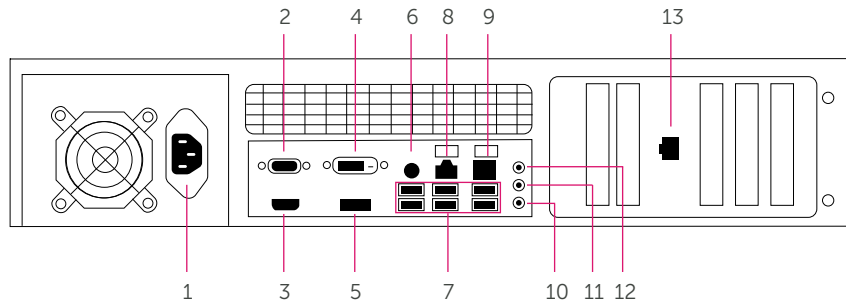
PoE SWITCH

Front Without Cover



- 1 USB 2.0
- 2 Reset Button
- 3 HDD Activity Monitor
- 4 Power Indicator
- 5 Ethernet Indicator
- 6 Power Button

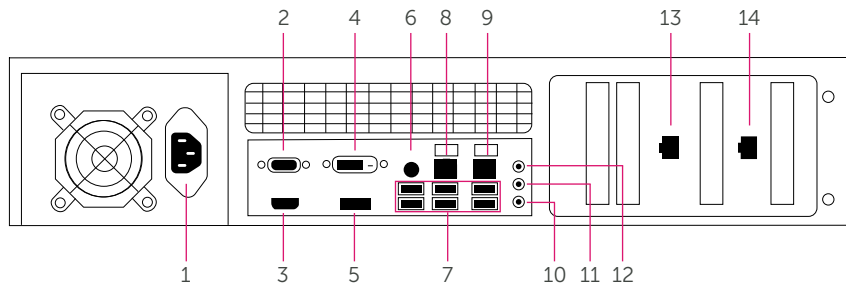
Back Windows 10 Rackmount



- 1 IEC Power Inlet
- 2 DB-9 Serial Port
- 3 HDMI Port
- 4 DVI-D Port
- 5 Display Port
- 6 PS2 Mouse/Keyboard
- 7 USB 3.0
- 8 RJ45 Port (Ethernet Jack) Primary LAN Network*
- 9 RJ45 Port (DO NOT USE THIS PORT)
- 10 Mic In
- 11 Audio In
- 12 Audio Out
- 13 RJ45 Port (Ethernet Jack) Camera LAN Network**

* The default IP address of this port is: 192.168.1.110
 ** The default IP address of this port is: 192.168.2.110

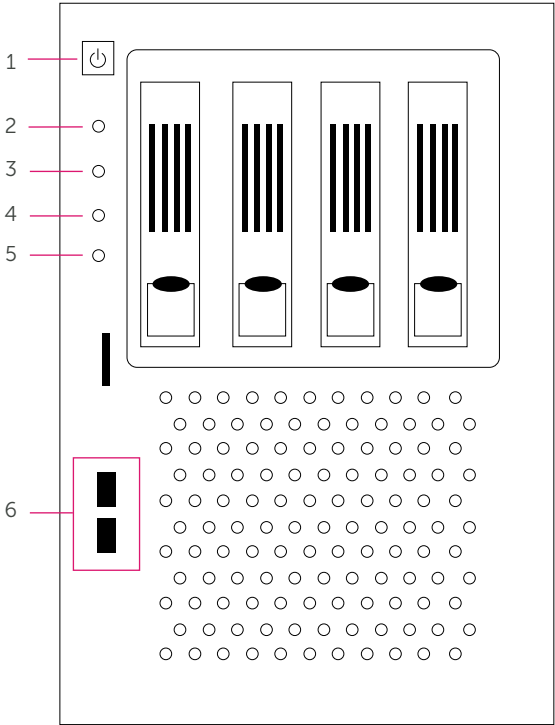
Back Windows Server 2016 Rackmount



- 1 IEC Power Inlet
- 2 DB-9 Serial Port
- 3 HDMI Port
- 4 DVI-D Port
- 5 Display Port
- 6 PS2 Mouse/Keyboard
- 7 USB 3.0
- 8 RJ45 Port (DO NOT USE THIS PORT)
- 9 RJ45 Port (DO NOT USE THIS PORT)
- 10 Mic In
- 11 Audio In
- 12 Audio Out
- 13 RJ45 Port (Ethernet Jack) Primary LAN Network*
- 14 RJ45 Port (Ethernet Jack) Camera LAN Network**

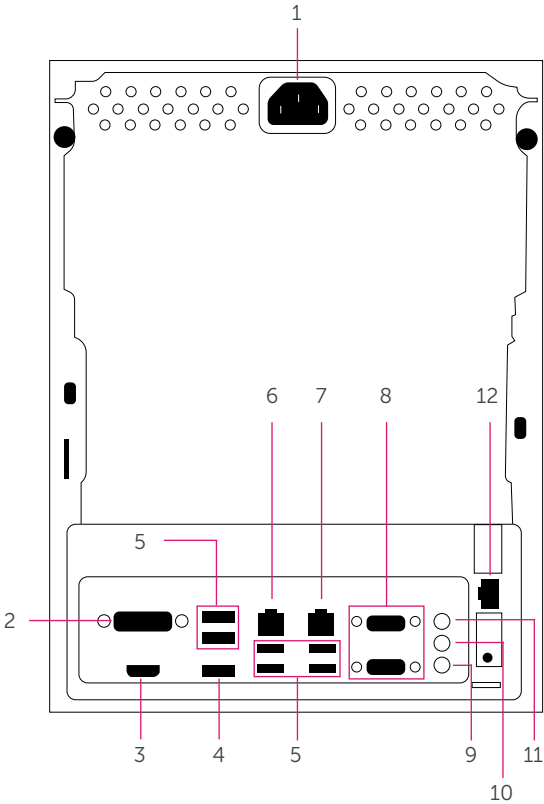
* The default IP address of this port is: 192.168.1.110
 ** The default IP address of this port is: 192.168.2.110

Front
Without
Cover



- 1 Power Button
- 2 Power Indicator
- 3 HDD Activity Monitor
- 4 Fan Indicator
- 5 Reset Button
- 6 USB 2.0

Back



- 1 IEC Power Inlet
- 2 DVI-D Port
- 3 HDMI Port
- 4 Display Port
- 5 USB 3.0
- 6 RJ45 Port (Ethernet Jack) Primary LAN Network*
- 7 RJ45 Port (DO NOT USE THIS PORT)
- 8 Serial Port
- 9 Microphone Jack
- 10 Audio Output
- 11 Audio Input
- 12 RJ45 Port (Ethernet Jack) Camera LAN Network**

* The default IP address of this port is: 192.168.1.110
 ** The default IP address of this port is: 192.168.2.110

- 1 Unpack all hardware and ensure that all components are included.
(See **What's Included** in the Table of Contents.)
- 2 Connect all peripherals (i.e. keyboard, mouse, monitor, etc.)
- 3 Connect the network cable to the RJ45 Port (Ethernet Jack) Primary LAN Network.
- 4 Power on the unit. Wait for the Windows Desktop to appear.

Note: The primary active network interface card (NIC), used for the Local Area Network is set to IP address: 192.168.1.110. If you want to change this IP address, use the Ocularis IP Configuration Utility.

Do I need to change my IP address? If you are not sure, contact support@onssi.com.

- 5 Right-click the 'Ocularis IP Configuration Utility' icon on the Windows Desktop and select 'Run as administrator'.

Note: In order for the IP Configuration Utility to work properly, the unit's IP address must be 192.168.1.110.

- 6 In the Ocularis IP Configuration Utility:

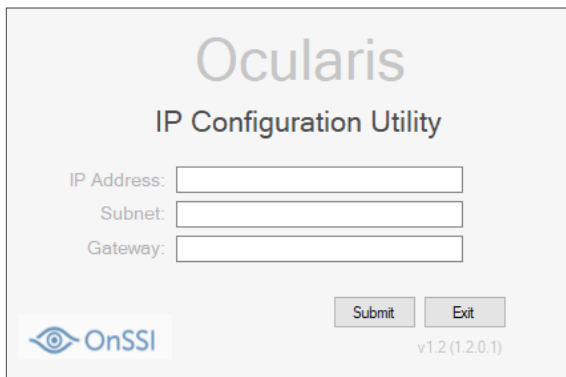


Figure 1
IP Configuration
Utility

- a. Enter the new **IP Address**.
 - b. Enter the new **Subnet**.
 - c. Enter the new **Gateway**.
 - d. Click **Submit**. You should see a progress bar and then a pop-up that the IP Address was successfully changed.
 - e. Click **Exit**.
- 7 You are done with initial setup.

Note: The second active network interface card (NIC), used for the camera connections, is set to IP address: 192.168.2.110. If you want to change this IP address, use the standard Windows IP configuration steps (see Windows Control Panel.)

FOR THE RECON5 SERVER

RecOn5 Server is intended to be part of an existing Ocularis system or to be used with a new enterprise-wide Ocularis system.

Consult with your system administrator on which Ocularis components to install.

To install Ocularis components, open the 'Ocularis Components' shortcut on the Desktop.

This will bring you to a folder (**C:\Ocularis Installer x64\Installers**) with executables allowing you to install any of the following components:

Ocularis Base

Ocularis Administrator

Ocularis Recorder (Master or Slave Core, Device Manager, Ocularis Recorder Manager and/or Update Service)

Ocularis Recorder Proxy

Ocularis Media Server

Xvid codec (in the Third Party Folder)

Use the **Ocularis Installation and Licensing Guide** located in the Documentation folder on the Windows desktop as a reference during installation.

FOR THE RECON5 NVR

A few additional steps are necessary to finalize system setup. These include:

License Ocularis Base

License the Recorder

Login to Ocularis Administrator

Configure Settings in Ocularis Recorder Proxy

Install Optional Component for Ocularis Web or Ocularis Mobile

Create a Windows Recovery Image

Note: Be sure that you received the Ocularis Base SLC via the order confirmation email.

Two licenses should have been included with your order confirmation email. The Ocularis Base license code begins with '932', or '964' or '928' (depending on model.)

- 1 From the Windows Desktop, launch the OC License Activation Application

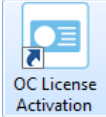


Figure 2
Ocularis Base License Activation

- 2 Type (or paste) the Ocularis Base SLC you received in your order confirmation email in the Step 1 text field. The SLC should have the following format, where 'X' represents numbers or letters:

9XX-XXXXXX-XXXXXXXXXXXXXXXXXXXX

- 3 Click **Activate License**.

- 4 If the RecOn5 appliance has internet connectivity, it will communicate with the OnSSI licensing server and update the application to reflect your licenses.



Figure 3
Successful License Activation

Proceed to Page 7, step m.

If the appliance does not have internet connectivity or the port is blocked, follow these steps:

- a. Click **OK** on the 'Offline Activation' pop-up.



Figure 4
Offline Activation is Required

- b. You will see a Step 2 and Step 3 appear.



Figure 5
Step 2 to create OcularisActivationRequest.html file

- c. Click the link '**Click here**' adjacent to Step 2. This will save an HTML file called OcularisActivationRequest.html locally at:

C:\Program Files\OnSSI\Ocularis Licensing Activation\OfflineActivation

DO NOT close the license applet before completing Step m on page 7 of this Guide.

- d. Copy this file to a USB flash drive.
- e. Then, bring the USB flash drive to any PC that is connected to the internet.
- f. Double-click the **OcularisActivationRequest.html** file.

- g. The default web browser will launch and load the 'Ocularis Offline Licensing' page as shown in Figure 6.



Figure 6
Ocularis Offline Licensing Web Page

- h. Click the **Download** button. An XML file called **response.xml** will be saved locally.

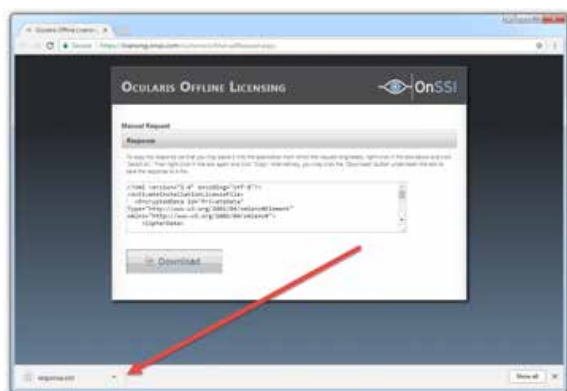


Figure 7
Sample response.xml file download using Google Chrome Web Browser

- i. Copy the **response.xml** file to the USB flash drive.
- j. Bring the USB flash drive back to the RecOn5 appliance.
- k. Click the '**Click here**' link next to Step 3 as shown in Figure 5.
- l. Navigate to the **response.xml** file located on the USB flash drive. Select it and click **Open**.
- m. You should see a 'License activation successful' message. Click **OK**.

- 5 Click **Close**.

LICENSE THE RECORDER

Recorder licensing should be done as soon as possible. For more comprehensive configuration instructions, refer to the document **RecOn5 NVR Setup Guide** located in the Documentation folder on the Windows desktop.

Note: If you run into any problems or your screens do not match those shown here, contact OnSSI Technical Support at **845-732-7900**, Option **3**.

Note: Be sure that you received the **Recorder SLC** via your order confirmation email. The SLC should have the following format, where 'X' represents numbers or letters: 501XXXX



- 1 Double-click the desktop icon OC Recorder Manager (64-bit).
- 2 At the login screen, enter the following credentials:

Server: **localhost** User: **admin** Password: **admin**



Figure 8
Log on Screen for Ocularis Recorder Manager

- 3 Then, click the checkmark.

The very first time you login, you will be asked to change the admin password:



Figure 9
Change the default admin password

Note: The checkbox for 'Enforce secure password' is checked by default. If checked, the password must meet the following criteria:

- Contain at least 8 characters
- Must have at least 1 digit (number)
- Must have at least 1 uppercase letter
- Must have at least 1 lowercase letter

If you do not require or desire this type of password, uncheck the 'Enforce secure password' box.

- 4 Enter the new password twice. A second password is not necessary.
- 5 When done, click **OK**.
- 6 At the pop-up 'The password has been changed.', click **OK**.
- 7 Next, the first time you launch the software, it will need to be licensed. You should see a pop-up similar to this one:

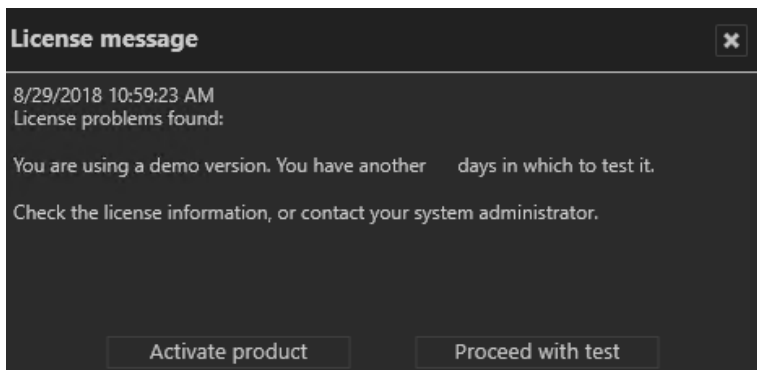


Figure 10
License Message
Click Activate
Product

Click **Activate product**.

Note: If the screen times out, you can still activate it from the Menu.

Info >> Activate product

- 8 Select **Online** if the RecOn5 appliance has internet connectivity. Select **Offline** if it does not.

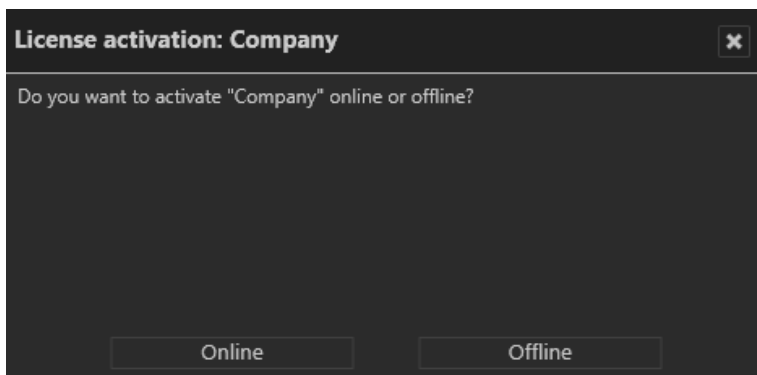


Figure 11
License Activation

Continue below with the section that applies to you:
Online Licensing or **Offline Licensing**.

Online Licensing

Follow these steps when licensing a RecOn5 appliance that has internet connectivity:

- 1 Click **Online** on the pop-up shown in Figure 11.

- 2 Click **OK** on the message pop-up reminding you that this feature requires a connection to the internet.

- 3 Verify that the **Personalize license** radio button is selected. (This is the default selection).

Figure 12
Personalizing the License

- 4 Enter your recorder SLC. This SLC should have seven digits starting with '501'.

- 5 Fill out the remainder of the form.

- 6 Click **OK** to confirm your entries.

The application connects to the OnSSI licensing server and obtains the license.

Proceed to **Login to Ocularis Administrator**.

To view your licensing information, from the Info menu, select **Show information >> Show license**.

Offline Licensing

Offline licensing is used when the RecOn5 appliance does not have internet connectivity. There are a few additional steps to perform (as compared to Online licensing) but it is a simple process.

For this process you will need:

- a. access to a computer that does have internet access in order to perform offline licensing on the appliance.

- b. a USB flash drive.

- c. access to an email account.

- 1 Click **Offline** on the pop-up shown in Figure 11.

- 2 Click **Copy** to copy the Product ID to the Windows clipboard from the Product ID tab. Then, click **Close**.

- 3 Paste the contents of the clipboard to a Notepad or other text file on portable media (i.e. USB flash drive).

- 4 Bring the portable media to any computer that does have internet connectivity.

- 5 From a browser, go to the URL: <http://onssi.com/ocularis-recorder-licensing/>
Or, you can go to www.onssi.com and navigate to Support, Ocularis Recorder Licensing.

Figure 13
Offline License
Activation
Webpage

- 6 In the section: 'Initial installation: New license code', enter your Ocularis Recorder SLC (i.e. the 7 digit SLC with the prefix '501') and fill out the remainder of the form. In the Product ID field, paste the contents of the text file that you created from the Ocularis Recorder Manager in step 3.

Note: A license file will be sent to the Installer email Address. You must have the ability to access this email account.

Note: Future changes to the license will be sent to the Installer Email Address, not to the End User.

- 7 When done, click **Submit**.
- 8 The SLC is verified with the OnSSI licensing server. A license key file is emailed to the Installer email account specified on the form. **There may be a delay of up to 10 minutes to receive the email from the licensing server.**
- 9 Open the Inbox for the Installer email account. Wait to receive the license file from OnSSI (**sales@onssi.com**). Be sure to check the spam/junk folder if you do not receive this email in a timely manner.
- 10 The license file is attached to the email. Detach the license key file from the email attachment and store it on the USB. Bring the file to the offline appliance running the Ocularis Recorder Manager.
- 11 In the Ocularis Recorder Manager application, choose the Info menu, select **Activate Product >> Offline** (if not already open).
- 12 Select the **Import license file** tab.
- 13 Click **Select** to navigate to the license file from step 10. Select the file and then click **Open**.
- 14 Click **Import** to use the license key.

You are done with Recorder licensing.

LOGIN TO OCULARIS ADMINISTRATOR

The first time login for Ocularis Administrator will require a password change. This step is important in order to continue with system configuration.

- 1 Launch the Ocularis Administrator.



Figure 14
Ocularis
Administrator
Login



- 2 Enter the credentials as follows:

Server: **localhost**
User: **admin**
Password: **admin**
Authentication: **Basic**

- 3 Click **Log In**.

- The following prompt appears asking for a new password:



Figure 15
Change the 'admin' password

You may use any characters, numbers, symbols, upper or lowercase. You can click the 'Show Password' checkbox to view what you typed. You will receive feedback on the strength of the password (weak, moderate or strong) and confirmation when both passwords match.

- Click **Save** to change the password.
 - Close Ocularis Administrator by clicking the **'X'** in the upper right corner of the window. Then, select **Shut Down**.
-

For more information on the Ocularis Administrator, refer to the **RecOn5 NVR Setup Guide** or the **Ocularis Administrator Guide** located in the Documentation folder on the Windows Desktop.

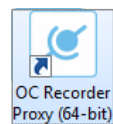
CONFIGURE SETTINGS IN OCULARIS RECORDER PROXY

The Ocularis Recorder Proxy is a required component for Ocularis to function properly and must be configured now. Follow these steps to configure:

- 1 Launch the Ocularis Recorder Proxy.



Figure 16
Ocularis
Recorder
Proxy



- 2 The **Recorder Settings** button is the only one enabled upon first launch. Click this button to enter Recorder criteria.

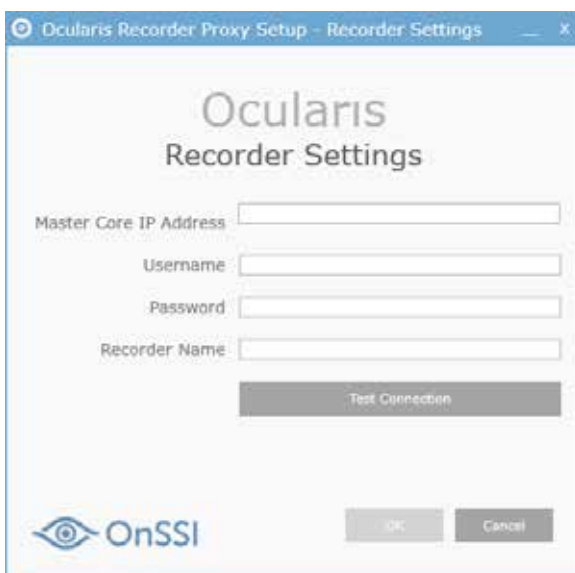


Figure 17
Recorder
Settings

- 3 Enter the **Master Core IP Address** for the RecOn5 Recorder's master core. Note that localhost is not supported. This is the IP Address set in Step 6a on page 3.

CONFIGURE SETTINGS IN IN OCULARIS RECORDER PROXY

- 4 Enter **admin** for the **Username** and enter the **Password** created in Step 4 on page 9.

- 5 For **Recorder Name**, enter a label as you would like this event source to appear in Ocularis Administrator. This field is optional. If left blank, the event source will be listed as:

IP_Address of Master Core (Ocularis Recorder) on IP_ Address of Recorder Proxy

For example: 192.168.10.82 (Ocularis Recorder) on 192.168.10.82

- 6 Click **Test Connection**. Communication with the server is tested, user account authenticated and if successful, a pop-up message appears indicating as such.

- 7 Click **OK**.

Once the **Recorder Settings** pop-up is configured, the **Base Settings** button becomes enabled.



Figure 18
Base Settings
button is enabled

- 8 Click **Base Settings**.



Figure 19
Base Settings

- 9 Click **Add Base**.



Figure 20
Add Base

- 10 Enter the IP address of RecOn5 appliance in the **Ocularis Base IP Address** field. Note that localhost is not supported. This is the IP Address set in Step 6 on page 3.
- 11 Enter **admin** for **Username** and enter the **Password** created in Step 4 on page 14.
- 12 Select **Basic** as the type of **Authentication** to use.

CONFIGURE SETTINGS IN IN OCULARIS RECORDER PROXY

- 13 Click **Test Connection**. Communication with the server is tested, user account is authenticated and if all is successful, a pop-up message appears indicating as such. The **Add** button is enabled.

- 14 Click **Add**. The Base List is updated.

- 15 Click **OK**. The **Event Filters** button is enabled.



Figure 21
Event Filters
button is enabled

- 16 The last step is to select the events that you wish for the proxy to forward to the Base. You must click the **Event Filters** button even if you are not using events. Click **Event Filters**.

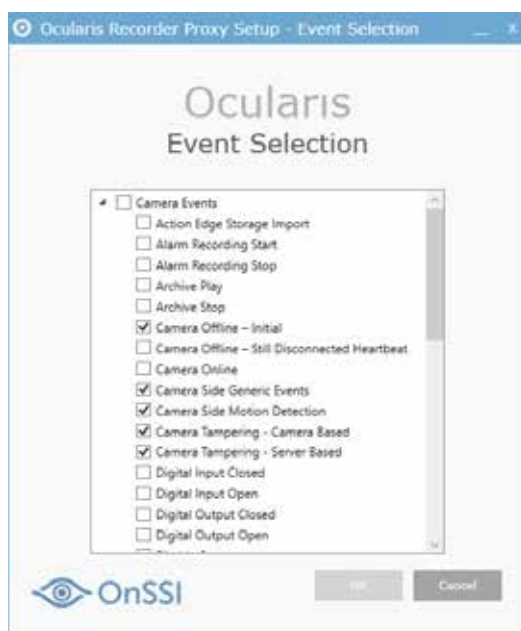


Figure 22
Select Events

The events you see listed are grouped by **Camera Events** and **System Events**. Check the events you want sent from the recorder to the Base. If the **OK** button is disabled, click any event and then uncheck it to enable the button.

- 17 Click **OK** to accept default events.

The Proxy Service may be stopped after configuration. If so, click the **Start Service** button. For more information on using and configuring the Ocularis Recorder Proxy, refer to the **Ocularis Recorder Proxy Configuration Guide** located on the OnSSI Product Documentation page of the OnSSI website <https://onssi.com/documentation/>.

INSTALL OPTIONAL COMPONENT FOR OCULARIS WEB AND OCULARIS MOBILE

If you want to access Ocularis video from your phone, tablet or web browser, you must install Ocularis Media Server on the RecOn5 unit. Please refer to the **RecOn5 NVR Setup Guide** located in the Documentation folder on the Windows Desktop for additional instructions.

CREATE A WINDOWS RECOVERY IMAGE

Due to the nature of Windows Enterprise licensing, we strongly recommend creating a recovery image for RecOn5.

If you see an 'S' symbol in the system tray, you may create a recovery image using the instructions in the document **RecOn5 Create and Restore a Factory Image** located at <https://onssi.com/recon5/createandrestorefactoryimage/>. Otherwise, consult your IT Department to create an image using standard Windows utilities.

NEXT STEPS

Refer to the **RecOn5 NVR Setup Guide** located in the Documentation folder on the Windows Desktop to continue with your system configuration.

OCULARIS

COMPONENT GLOSSARY

The Ocularis Platform consists of the following components:



Ocularis Administrator (OC Administrator) – This is the front end software application used to configure and manage Ocularis Base. Ocularis Base is the server application which regulates and manages the flow of data between video client users, recording servers, video wall management, event management and alerting.



Ocularis Client (OC Client) – OnSSI's award-winning video client application used to view and monitor surveillance video.



Ocularis Recorder Manager (OC Recorder Manager) – This is the front end software application used to configure and manage Ocularis cameras, device managers and cores. Use it to log into the recorder's master core to gain access to camera configuration.



Ocularis Recorder Proxy (OC Recorder Proxy) – This component manages many aspects of Ocularis including: transmitting events from recorders to Ocularis Base, managing multiple live streams from cameras, handling PTZ presets, optimizing the best stream to use with Ocularis 5 Web or Mobile and much more. It is a very important component and must be installed on every Ocularis system.



Ocularis Media Server – This component allows for the viewing of Ocularis video using a web browser (Ocularis 5 Web) or mobile device (Ocularis 5 Mobile).



Ocularis License Activation Application (OC License Activation) – This applet is used to license Ocularis Base.



©2018 On-Net Surveillance Systems, Inc. All rights reserved. OnSSI, Ocularis, and the eye logo herein are trademarks of On-Net Surveillance Systems, Inc. Windows and Windows Server are registered trademarks of Microsoft Corporation. All other trademarks are the property of their respective owners. On-Net Surveillance Systems, Inc. reserves the right to change product specifications without prior notice. Installation requirements vary. Please contact an OnSSI sales engineer for system design considerations.

Visit OnSSI.com/RecOn5

On-Net Surveillance Systems, Inc.

One Blue Hill Plaza, 7th Floor
PO Box 1555, Pearl River, NY 10965
Tel: +1-845-732-7900
www.onssi.com

